

# BirdLife Sweden

- Project Mapping important marine  
bird migration routes and bird areas



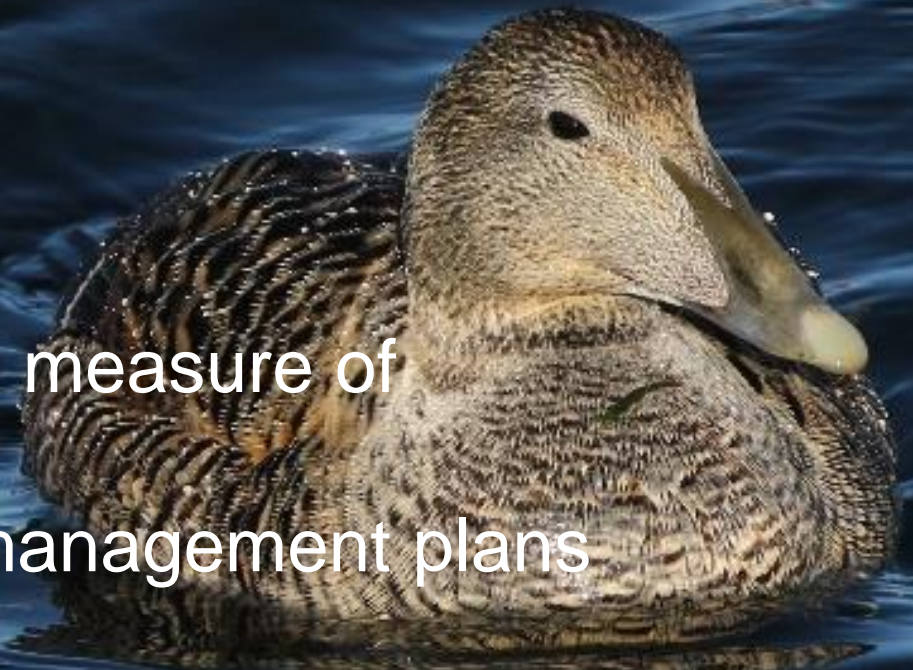
# Background

Birds are valuable as a measure of ecosystem health

On going process for management plans of the Baltic Sea

Today good knowledge of wintering ducks, to little standardized data of birdmigration and huge knowledge gap for colony feeding areas of colony breeding seabirds

There is need of better protection of thge Baltic seabirds



# What will the project do part I

Put together:

- All known data from reports (mostly Lunds university) on important wintering areas for ducks
- Use data from Artportalen (birdobservations) for both migration routes and important marine bird areas
- Collect data from ornithologists of coastal bird migration



# What will the project do part II

Map important feeding areas for colony breeding seabirds that feeds long distances from breeding sites. This will be done by using GPS-technology to track the seabirds

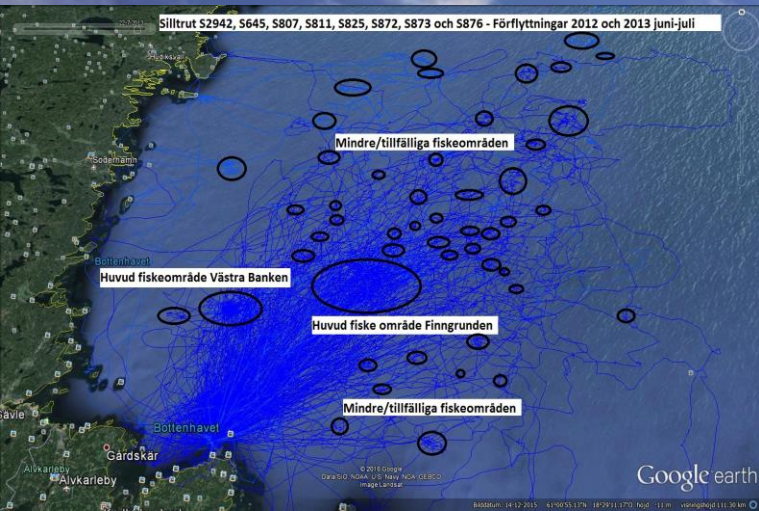


# What will the project do part III

Start up a standardized migration  
monitoring of seabirds



# Outcome of the project



- A report covering where, when and how birds migrate in the Swedish part of the Baltic Sea
- Also included in the report are the important stopover, moulting and wintering areas
- Gathered information will also be shown

# Thanks

With a hope of a bright future for the Baltic seabirds

