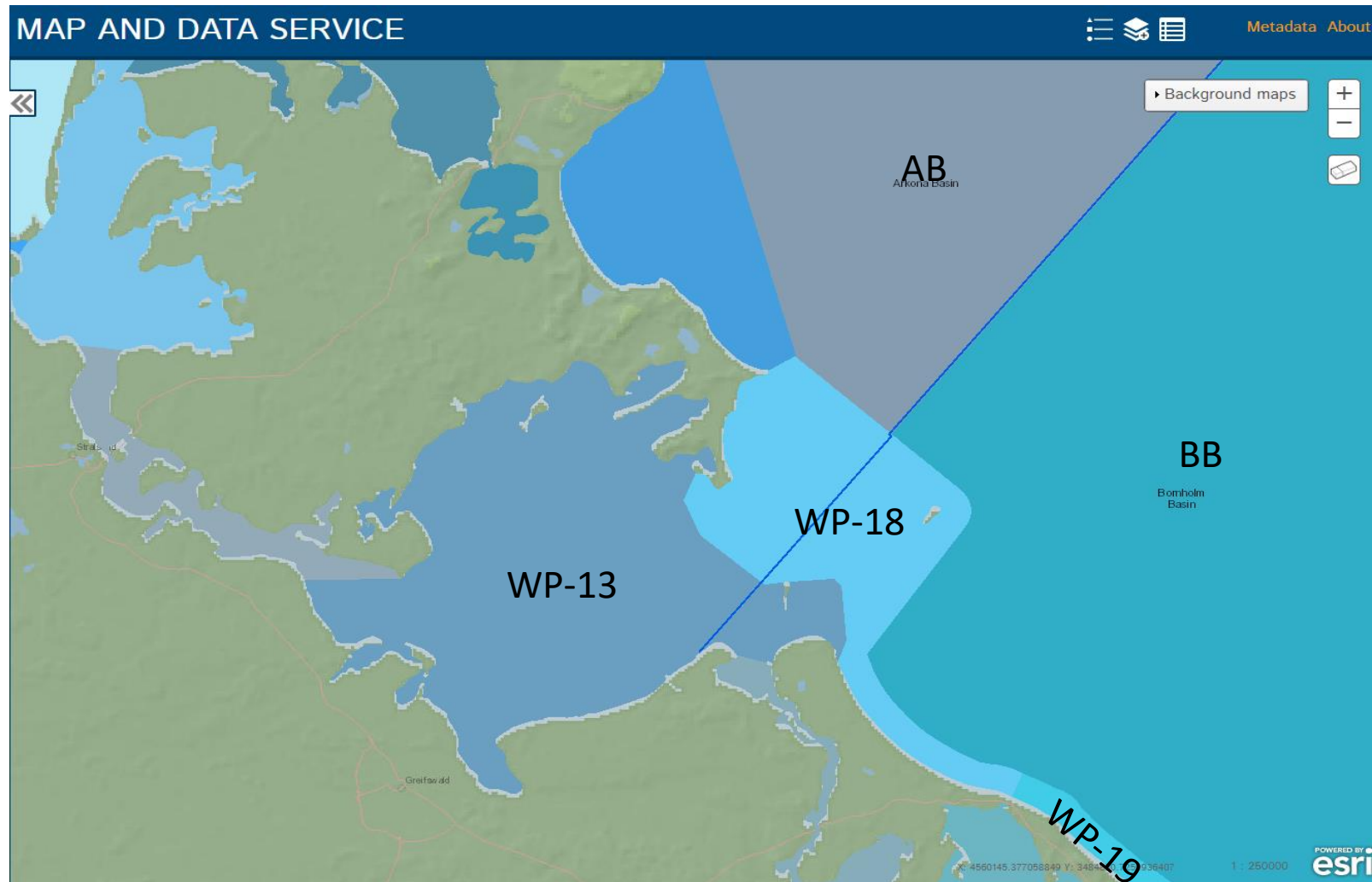


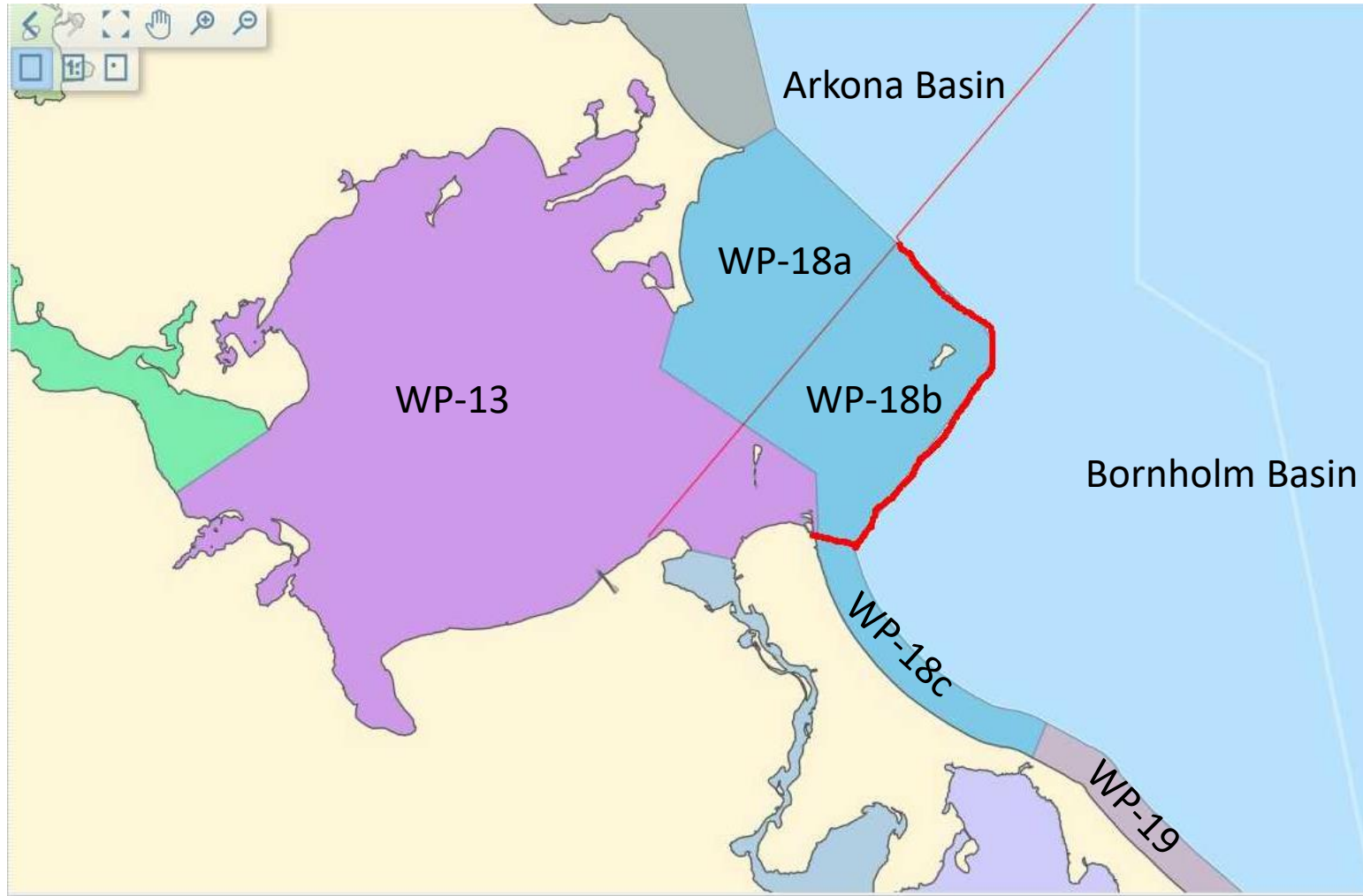
HELCOM STATE & CONSERVATION 15-2021

Doc. 3J-35 – Proposal to align the Western Boundary of Bornholm Basin with the national MSFD and WFD reporting units in German coastal waters

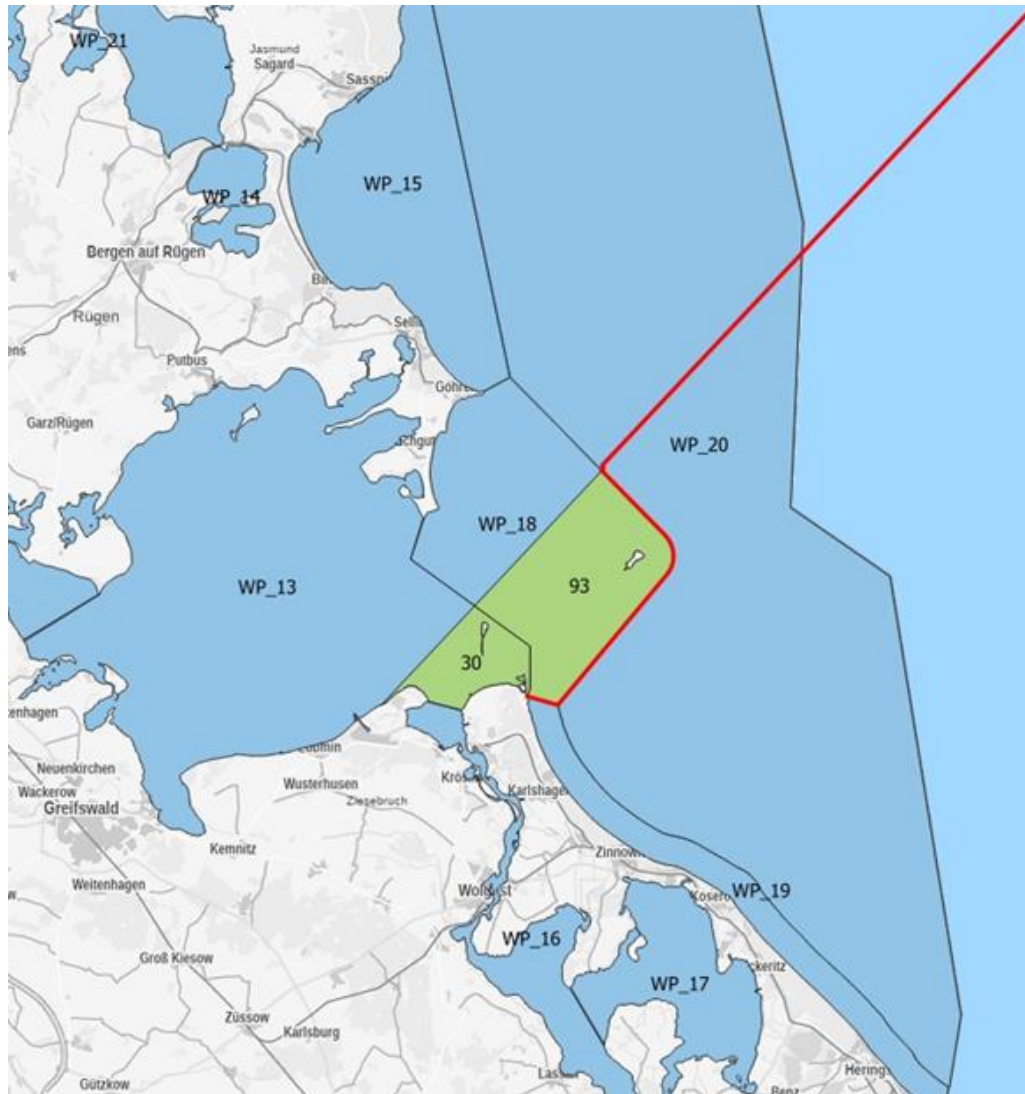
Submitted by Germany



Problem: a) Bornholm basin boundary is cutting two WFD waterbodies into pieces and b) nationally, these waterbodies are assigned to Arkona Basin



Solution: align Bornholm basin boundary with water body boundary (thick red line) and as a compromise with WFD cut outer waterbody WP-18 at an appropriate place



Effect of this change:

Green parts of waterbodies
move to Arkona Basin

= area of $30 + 93 = 123 \text{ km}^2$

= abt. 0.3 % of Bornholm
Basin will move to Arkona
Basin

No effect on monitoring
stations/assessment