

MPAs and fisheries management in the German EEZ

Dr. Gesine Lange

Consultant for the German Federal Agency for Nature Conservation (BfN)

HELCOM STATE & CONSERVATION 11-2019, 21-25 October, Riga



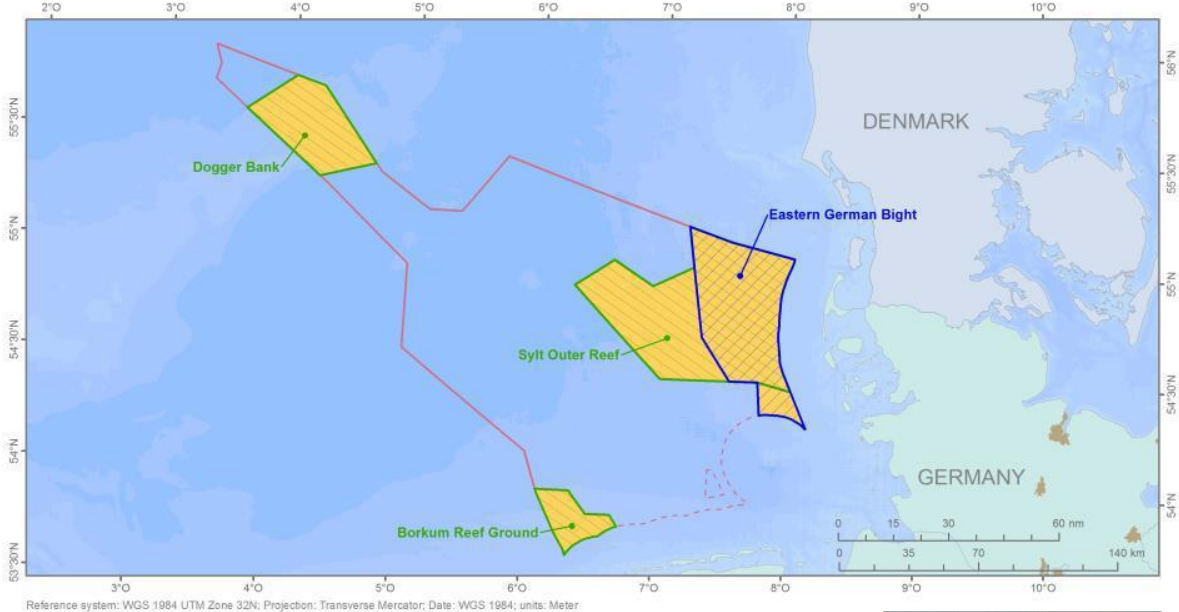
Structure of the presentation

- Introduction to CFP
- Fisheries measures in Natura 2000-sites of the German EEZ
 - North Sea
 - Baltic Sea

Common fisheries policy

- Measures for regulation of commercial fisheries in MPAs of EEZ only within framework of CFP
- Develop “joint recommendations” (Art.11&18 CFP)
 - Must be submitted to and agreed by all MS with fishing interests
 - Scheveningen/Baltfish process: Agreement of „Ad-Hoc-Group“ and „High-Level-Group“ within 6 month
- EU- Commission: delegated regulation within 3 month
 - Consent of European Parliament and European Council needed

North Sea



Administrative borders
 — German EEZ
 - - - German Territorial Waters



Marine Protected Areas in the German EEZ of the North Sea (as of 01/2014, differentiation between Natura 2000 site-types shown)

- Sites of Community Importance (SCIs) according to the Habitats Directive in the German Exclusive Economic Zone (EEZ; 12 - 200 nm)
- Special Protected Areas (SPAs) according to the Birds Directive in the German Exclusive Economic Zone (EEZ; 12 - 200 nm Zone)



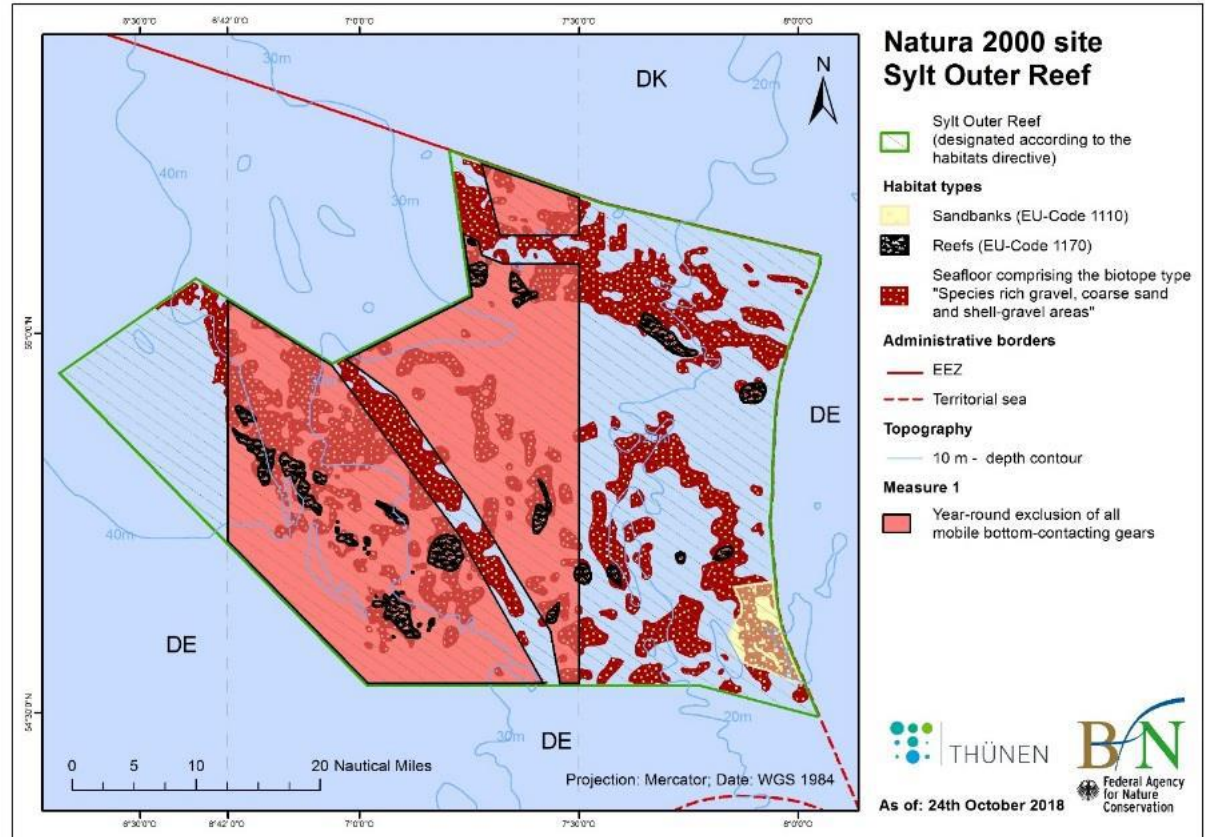
North Sea

Jointly agreed fisheries measures submitted to EU-commission on 4 February 2019

- Exclusion of mobile bottom-contacting gears
- No-take zones
- Restriction of gillnets and entangling nets

North Sea

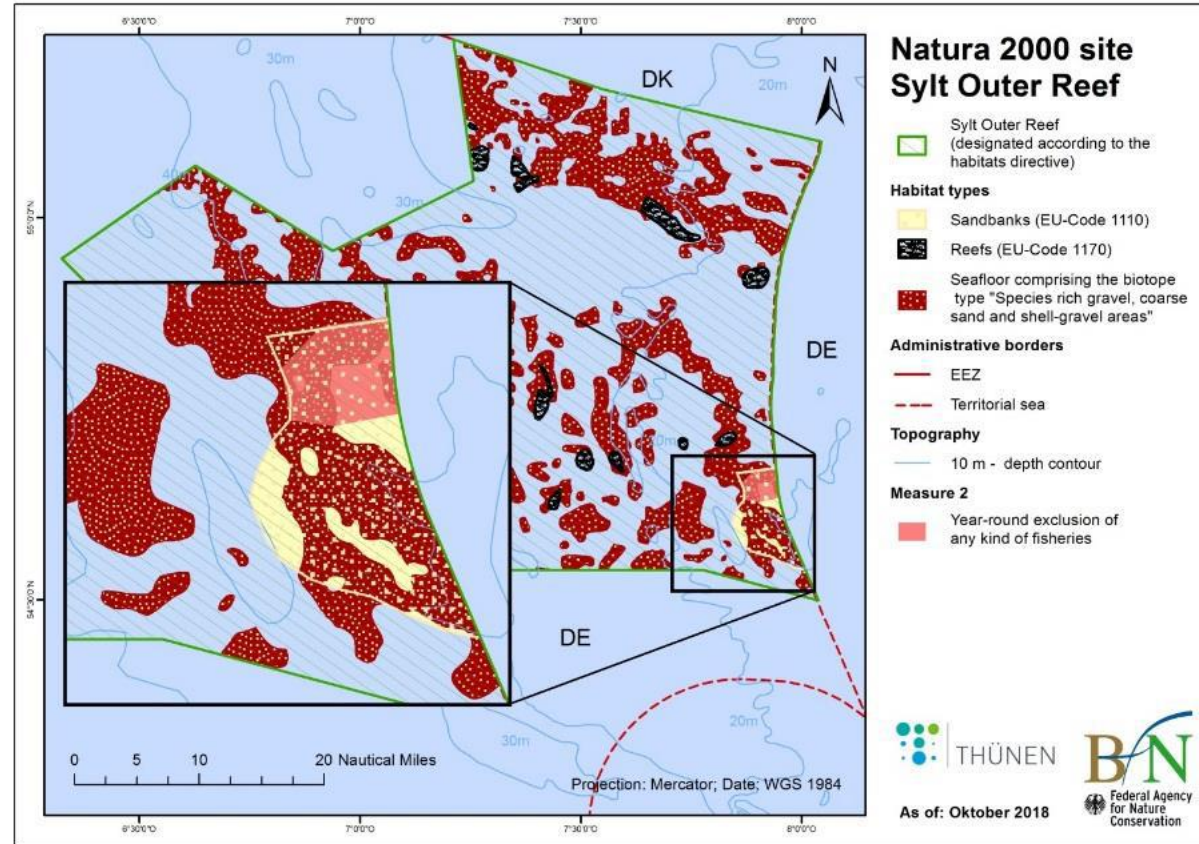
- Protect HD habitat type 1170 'Reefs'
 - Implementation of the MSFD by protecting species-rich gravel, coarse sand and shell-gravel areas
- Year-round **exclusion of mobile bottom-contacting gears** in three management areas of the MPA



North Sea

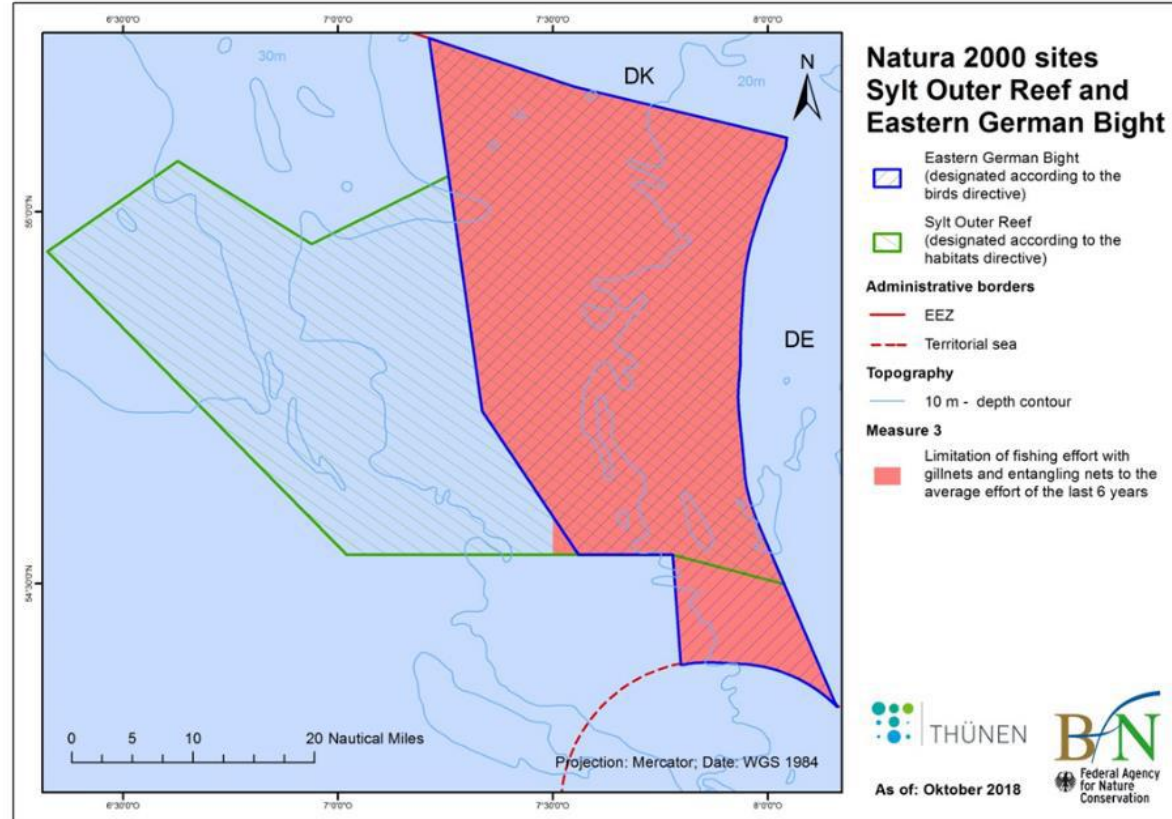
- Protect Amrum Bank
- Implementation of the MSFD by protecting species-rich gravel, coarse sand and shell-gravel areas

➤ **exclusion of all fisheries** in the northern part (25%) of Amrum Bank



North Sea

- Protect endangered seabirds in the Eastern German Bight
 - Protect harbour porpoise in the eastern part of the Sylt Outer Reef
- **Limitation of fishing effort with gillnets and entangling nets to the average effort of the last 6 years**

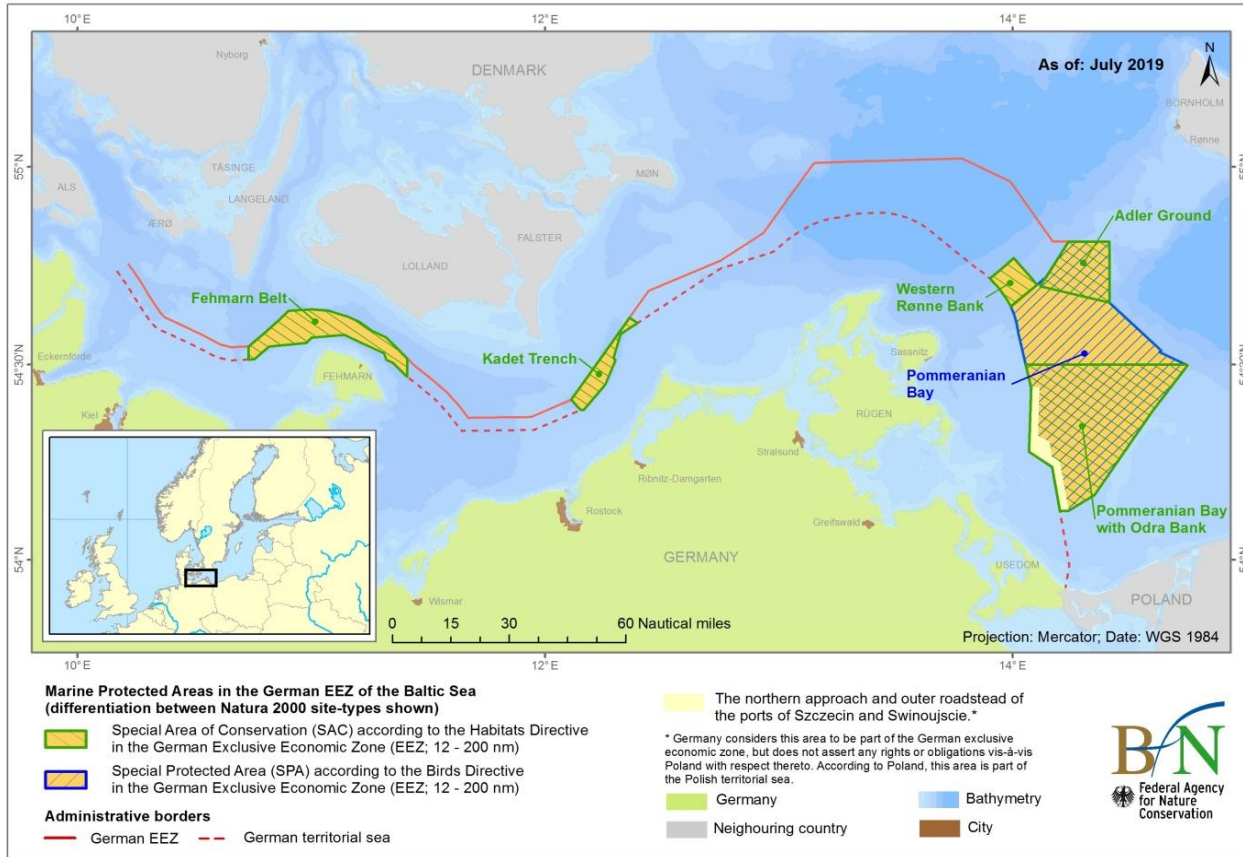


North Sea

Letter from EU commission:

- Exclusion zone of mobile bottom-contacting gears should be extended to protect **habitat types** 1110 'Sandbanks' and 1170 'Reefs' in MPA Sylt Outer Reef & extension of no-take zones in Sylt Outer Reef/Amrum Bank
- Complete ban of gillnets and entangling nets could have a larger positive impact to protect **harbour porpoise** and **diving seabirds**
- Increase of VMS ping frequency (higher than every 30 min) is needed for **control of measures** (problematic when restricted areas is very small or separated by corridors)
- Need for **monitoring measures** to assess effectiveness of fisheries management measures

Baltic Sea



Baltic Sea

Conservation goals:

- Re-establishing FCS
- Efficient protection of habitat types 1170 'Reefs' and 1110 'Sandbanks' and their benthic communities
- Contribute to implementation of MSFD and to achieve GES
 - heterogeneous benthic communities
 - species-rich reefs (macroalgae, epibenthos, blue mussel beds)
 - retreat, feeding site for cod
 - only offshore *Fucus*-population in DE EEZ (Adler Ground)
 - Pomeranian Bay with Odra Bank:
 - spawning and nursery area for turbot
 - feeding ground for twait shad
 - high abundances of benthic fauna
 - feeding ground for resting, moulting and wintering seabirds & harbour porpoise
(Baltic Proper population)

Baltic Sea

- Joint recommendation: proposals only for **mobile bottom-contacting gears**
- Gillnet fisheries measures at later stage
- National consultation: 06 February 2019
- International process has not yet been started

Baltic Sea

Concerned MS:

Denmark

Estonia

Finland

Latvia

Lithuania

Poland

Sweden

Concerned gears:

boat seines

bottom otter trawls

boat dredges

hand dredges used on board a vessel

...

Thank you for your attention!

