

Document 4-2: Distribution maps of marine mammals for HOLAS II

The Meeting is invited to review and comment on the latest version of the maps in order to provide best available information on marine mammals distribution to be used in the 2018 version of the BSII.



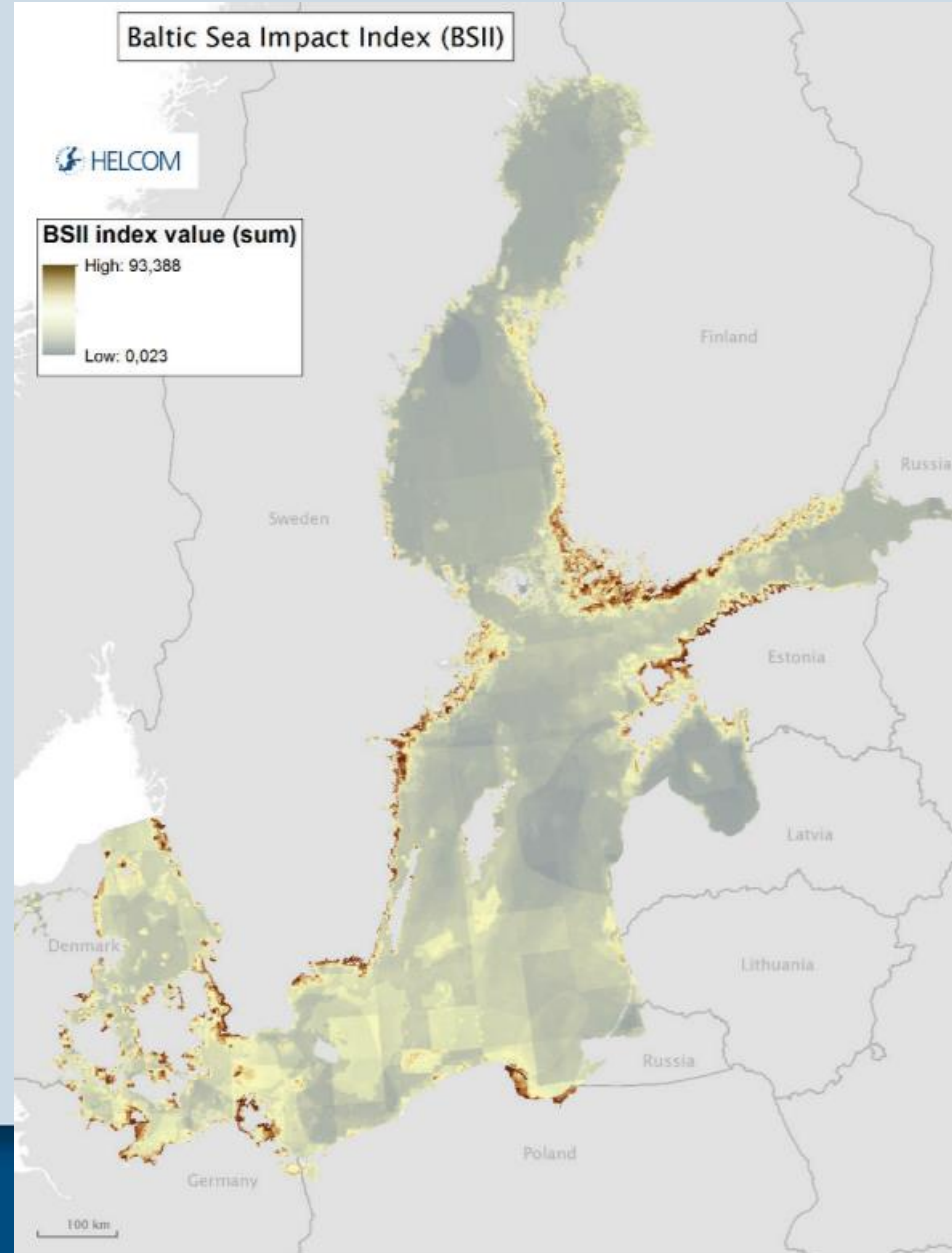
HELCOM

Use of distribution maps

- Baltic Sea Pressure/Impact Index
 - Identifies areas of the Baltic Sea where the cumulative amount of human induced pressures and impacts is likely the highest
 - Input data
 - 41 human activities → 19 Aggregated pressure layers (MSFD Annex III)
 - 36 Ecosystem component maps (4 marine mammal maps)
 - Sensitivity scores
 - Description of methodology:
 - Assessment of cumulative impacts using the BSPI and BSII
First version 2017 – to be updated in 2018:
http://stateofthebalticsea.helcom.fi/wp-content/uploads/2017/09/HELCOM_The_assessment_of_cumulative_impacts_Supplementary_report_first_version_2017.pdf



Baltic Sea Pressure/Impact Index

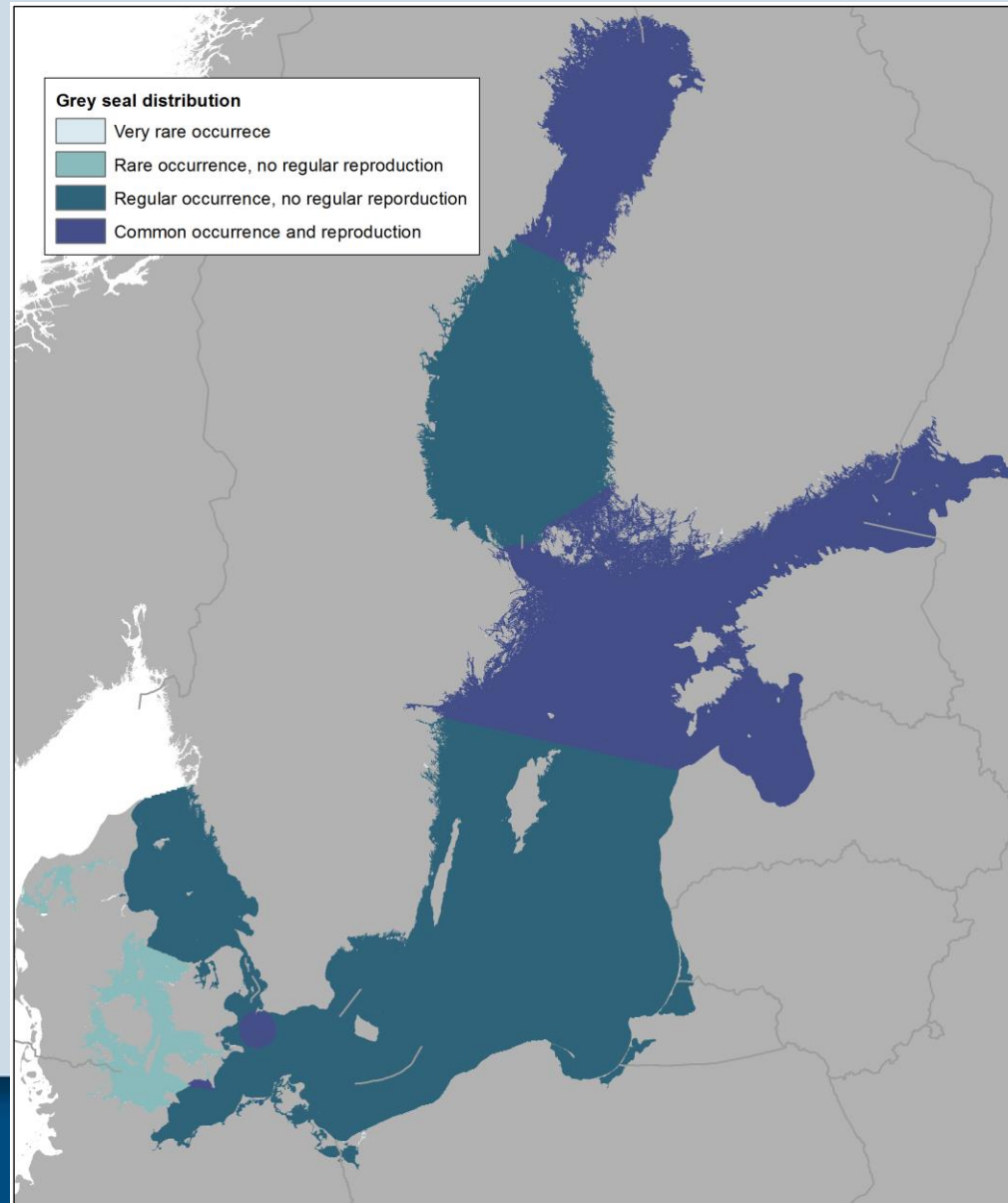


Distribution maps: Background

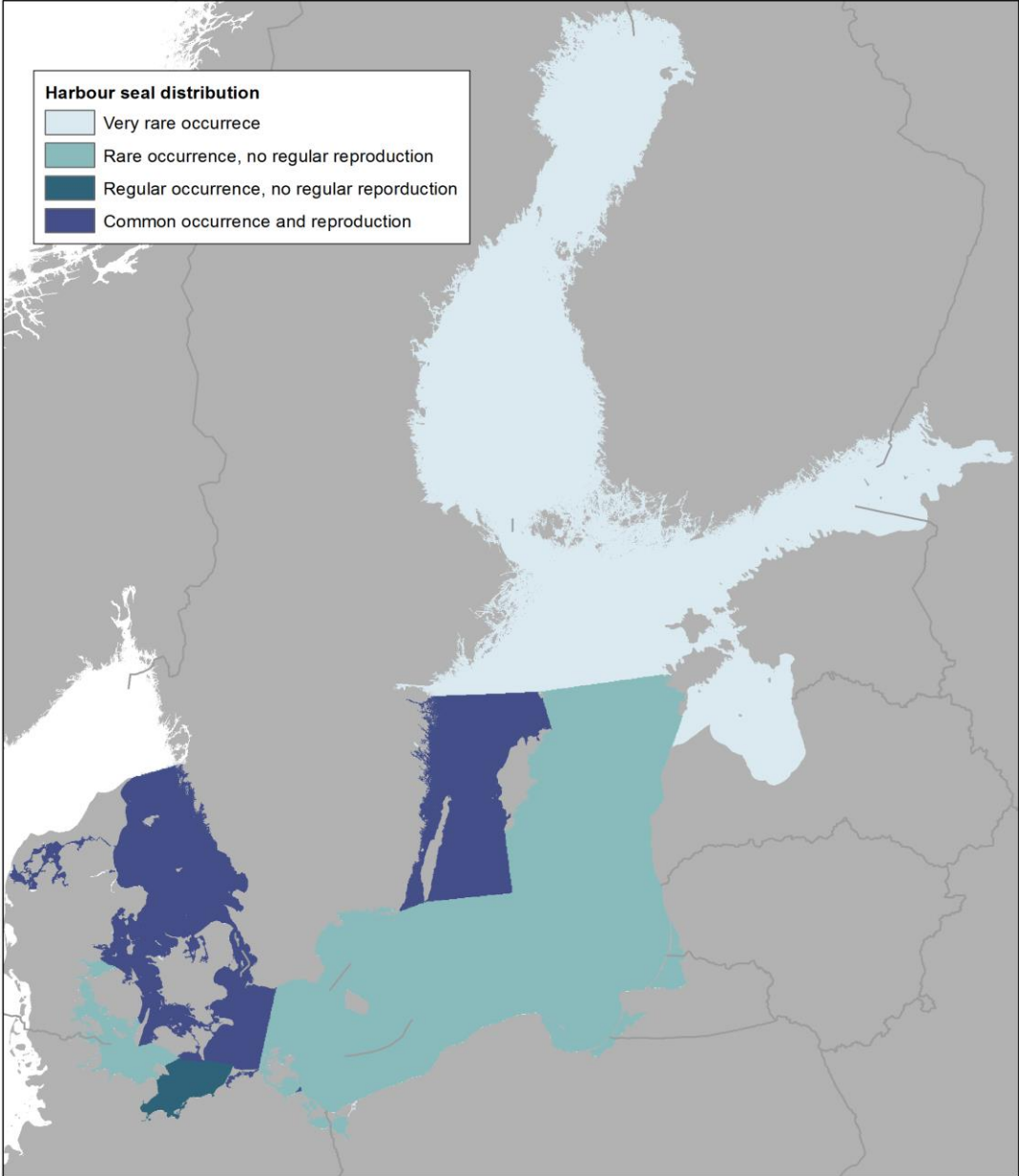
- SEAL EG 10 2016 reviewed marine mammal maps that were developed for HOLAS II and was of the opinion that at present the maps are biased and would need to be improved before they can be used for the Baltic Sea Impact Index in HOLAS II.
- The Meeting considered using the marine mammal maps from the [2013 HELCOM Red List assessment](#) for the impact index and suggested to review and, if needed, to modify the maps based on expert opinion.
- → Maps were further developed and approved to be used for HOLAS II by HELCOM Contracting Parties
- In the process of publishing first version of HOLAS II datasets, Germany provided additional information to modify distribution maps of Grey seal and Harbour seal in Bay of Mecklenburg subbasin.
- The secretariat made modifications according to information provided by Germany to be used for the 2018 update of BSPI/BSII. The modified version of maps are included in Document 4-2



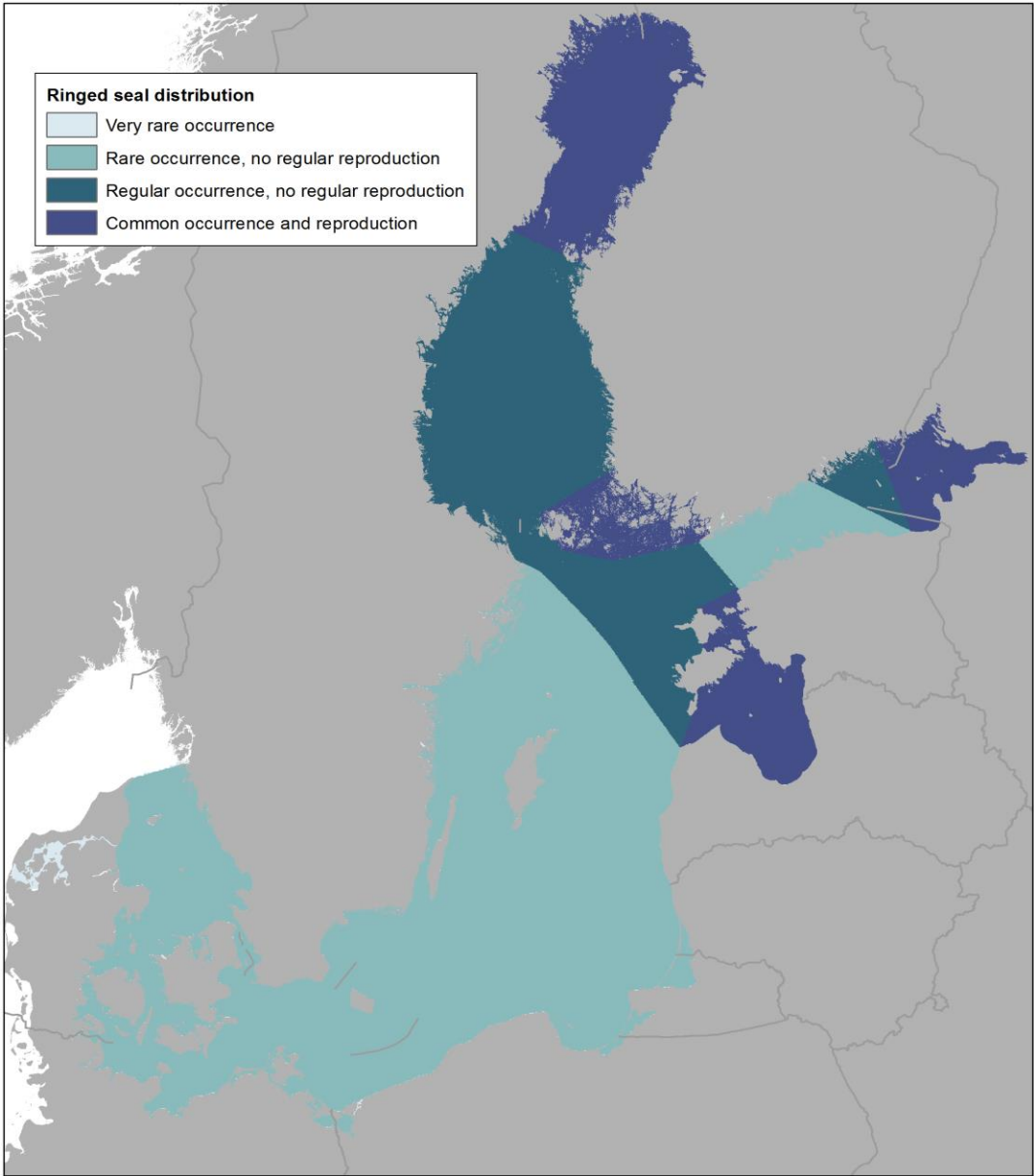
Map: Grey seal



Map: Harbour seal



Map: Ringed seal



Map: Harbour porpoise

