

Document 2-5: Updating HELCOM Assessment units for 2018 update of HOLAS II

The Meeting is invited to take note and make use of the information.



HELCOM

Updating HELCOM Assessment Units: Background

- HELCOM Assessment units were modified for the 2018 update of the State of the Baltic Sea report as requested by HELCOM STATE & CONSERVATION 6-2017 ([outcome](#), para 2.MA5-10).
- Attachment 4 of [HELCOM Monitoring and Assessment Strategy](#) was modified accordingly.
- All indicators should be calculated with new 2018 version of assessment units for the 2018 update of HOLAS II.

The new assessment units can be accessed from the HELCOM Map and Data service:

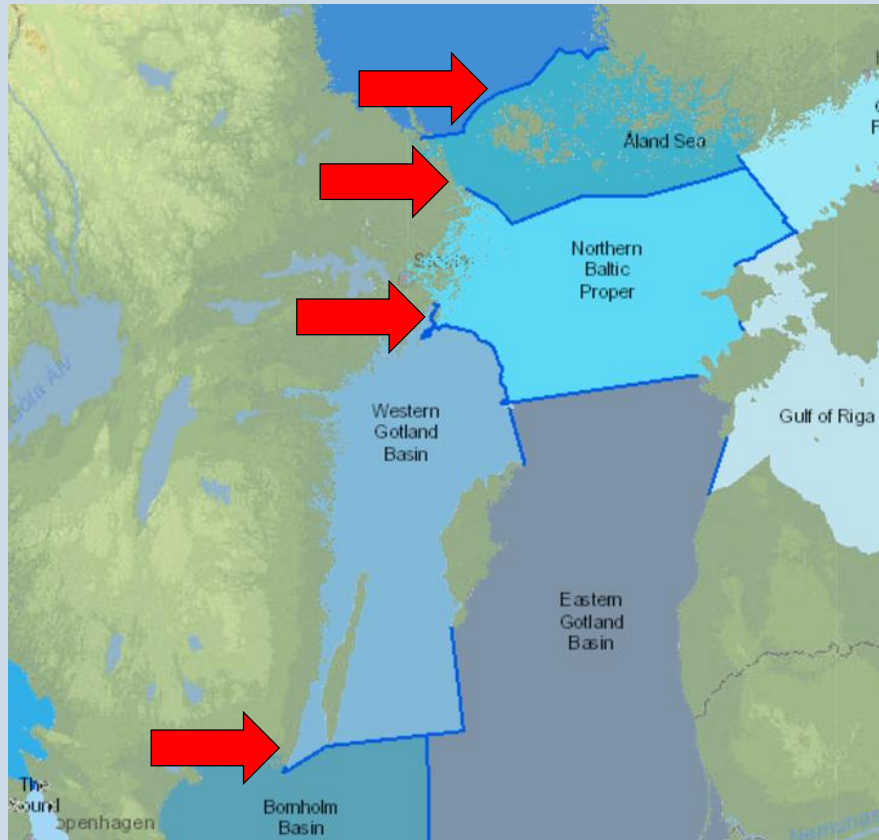
Level	Assessment unit	Download
1	HELCOM Marine area 2018	Link
2	HELCOM Subbasins 2018	Link
3	HELCOM Subbasins with coastal and offshore division 2018	Link
4	HELCOM Subbasins with coastal WFD water types or water bodies 2018	Link



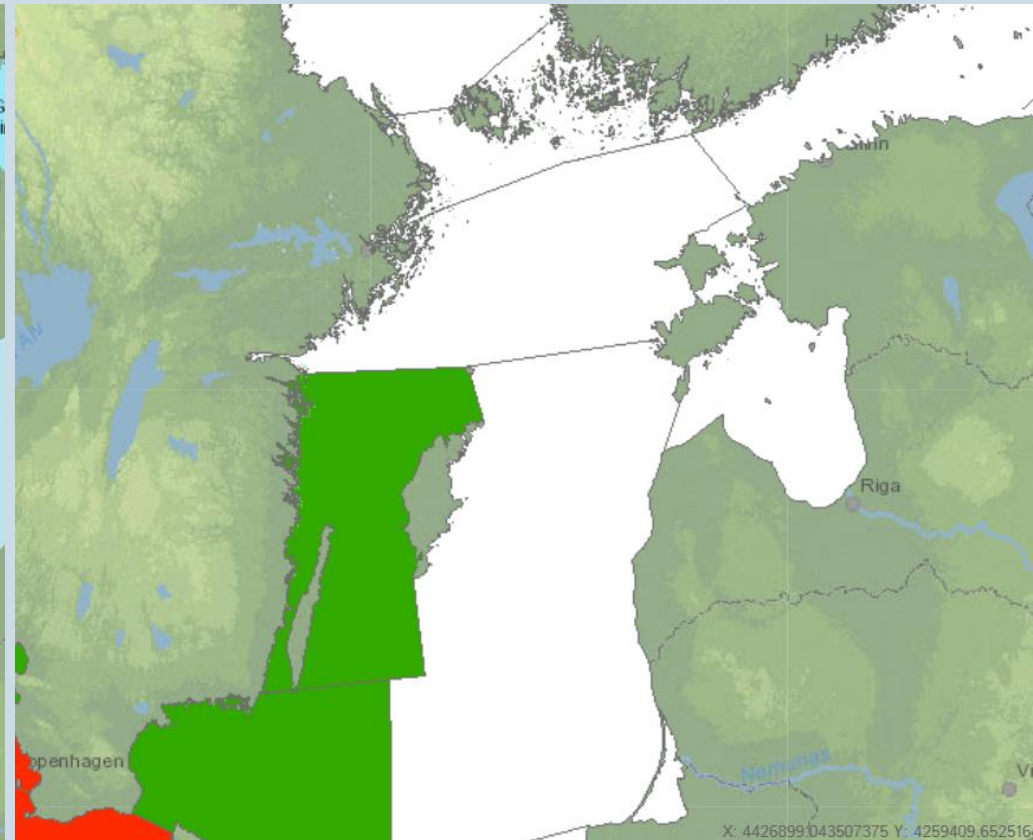
Updating HELCOM Assessment Units

1. New subbasin division line between Åland Sea, Northern Baltic Proper, Western Gotland Basin and Bornholm Basin affecting levels 2-4

NEW VERSION



OLD VERSION

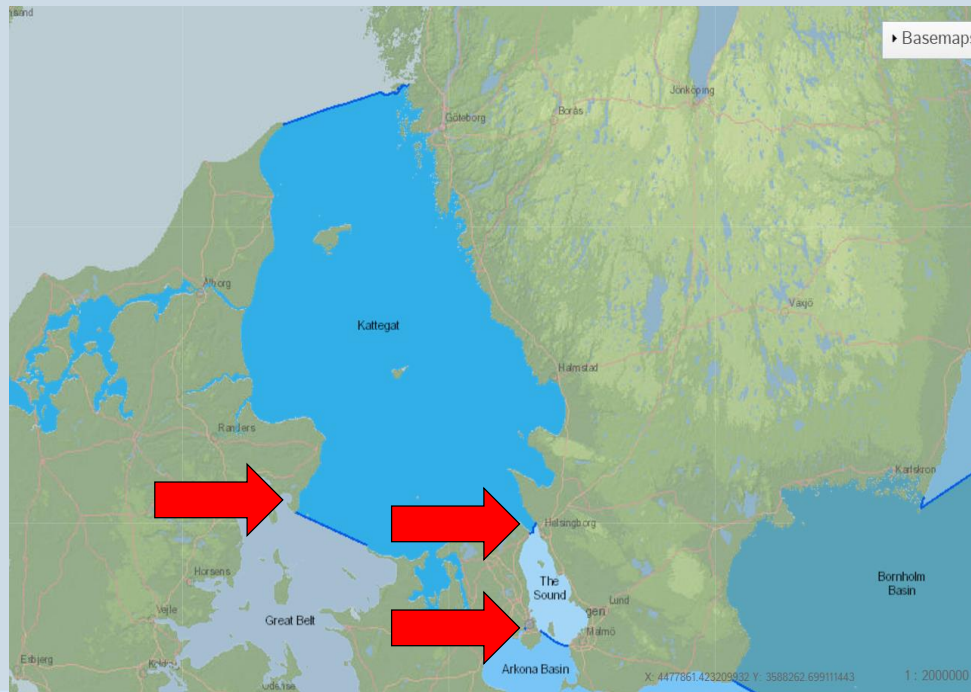


HELCOM

Updating HELCOM Assessment Units

2. New subbasin division line between Kattegat, Great Belt, The Sound and Arkona basin affecting levels 2-4

NEW VERSION



OLD VERSION



HELCOM