



Naturhistoriska
riksmuseet

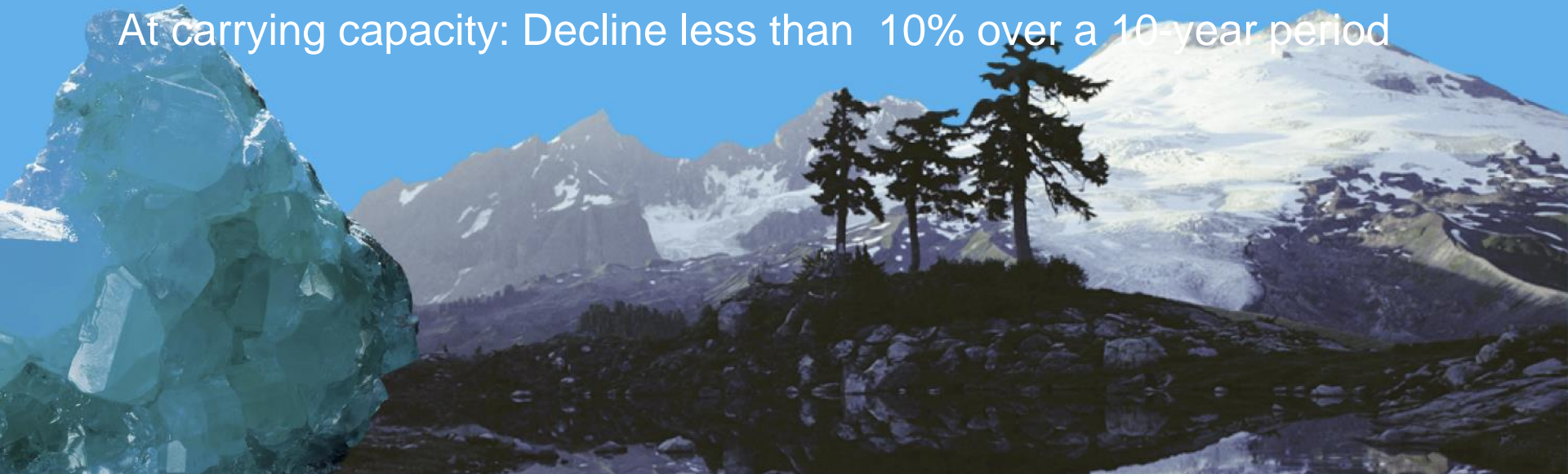
Trends and abundance

Limit Reference Level for isolated populations is 10000
LRL for connected sub-populations is 10000

GES for trend under exponential growth is 7% for ringed seals and grey seals, and 9% for harbour seals

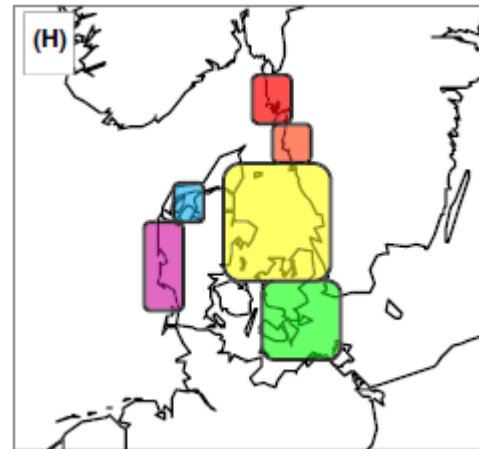


At carrying capacity: Decline less than 10% over a 10-year period



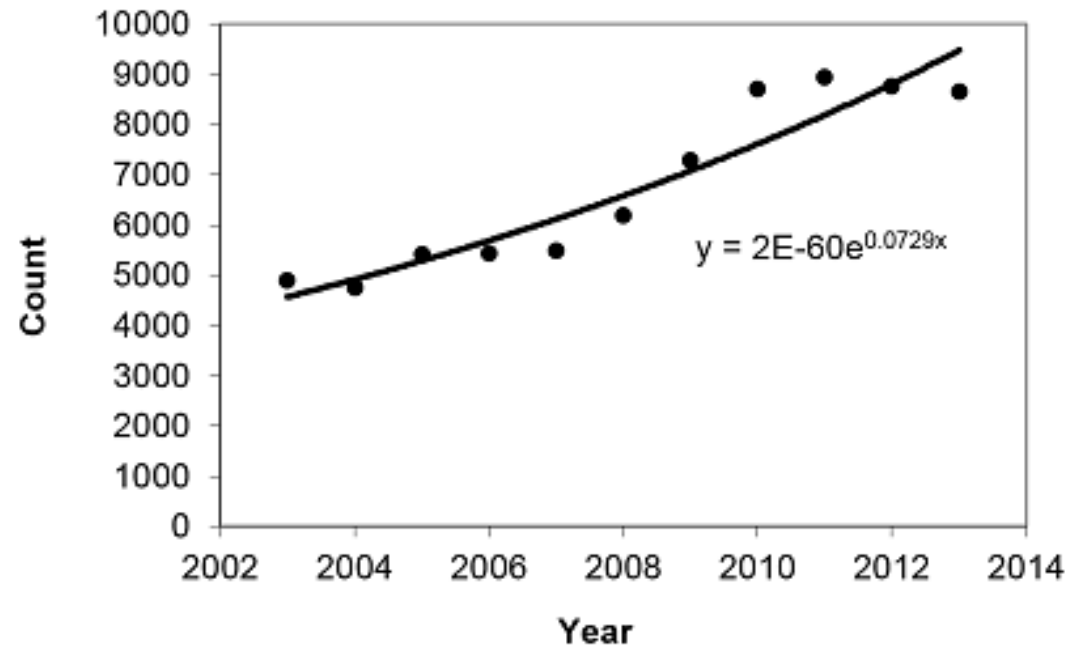
Evaluation units

- Grey seal one evaluation unit
- Ringed seal two units
- Harbour seals several ecological units
- Should be treated as a metapopulation regarding abundance

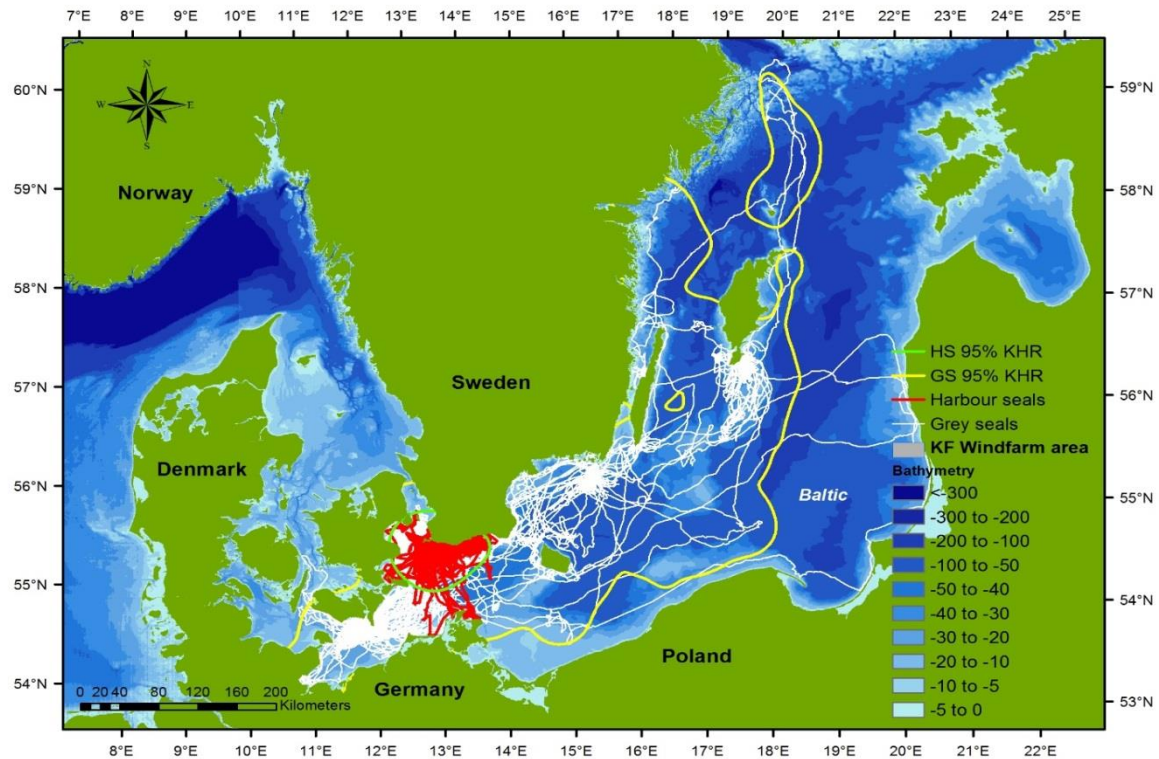


Transition phase

- Grey seals: 5.1%
- Harbour seals Kattegat 7.2%



Distribution



Study reservation Trends and Abundance

Danish comment; The LRL (10000) will never be achieved in Denmark.

The 10 000 is only for isolated populations. Danish population connected.

