



Baltic Marine Environment Protection Commission

Seventh Baltic Sea Pollution Load Compilation (PLC-7)
Project Implementation Group

PLC-7 IG 9-2019

Helsinki, Finland, 16-18 December 2019

Document title	Updating the catchment properties and land use chapter for the PLC-7 background report
Code	4-4
Category	CMNT
Agenda Item	4 - Current activities of the PLC-7 project and coordination with other HELCOM activities including ACTION project
Submission date	11.12.2019
Submitted by	Secretariat
Reference	

Background

PLC-7 IG 5-2018 agreed in general on the sections of the background report which are to be updated for PLC-7. The section on catchment properties and land use is one the chapters to be updated.

This document presents the draft updated map and table for the chapter, including two different data sources for the table presenting land-use proportions.

Action requested

The Meeting is invited to consider the updated information.

Updated figure and table for PLC-7 background report chapter on Catchment properties and land use

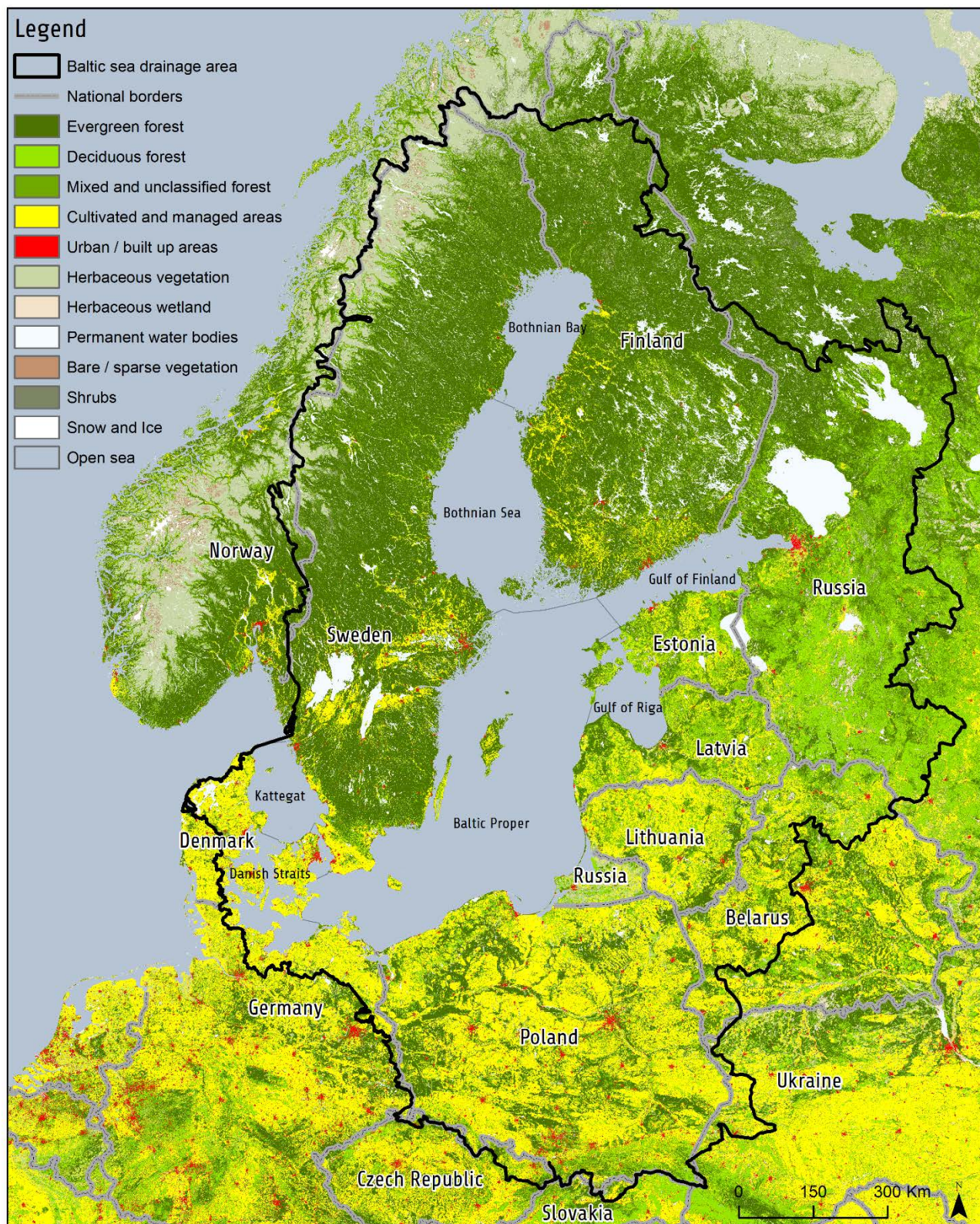


Figure 1 Land cover in the Baltic Sea catchment area (Source: The Copernicus Global Land Service 2015)

There are various sources to get information on land use of the Baltic Sea catchment area, and they have different ways of classifying the land use and therefore the values vary from one source to another. For the tables below, the source of table 1 one is The Copernicus Global Land Service 2015 and it includes all countries in the catchment area. For table 2 the source is Corine Land Cover 2018 and covers all countries in the catchment excluding Russia, Belarus and Ukraine. Note that the values include only those parts of each country that are situated within the catchment area.

Table 1 Land cover and land use for all countries at the Baltic Sea catchment area in percentage. (Source: Copernicus Global Land Service 2015)

CGLS-LC100 2015

	Denmark	Estonia	Finland	Germany	Latvia	Lithuania	Poland	Russia	Sweden	Belarus	Czech Republic	Norway	Slovakia	Ukraine	Total
Year of data	2015	2015	2015	2015	2015	2015	2015	2015	2015	2015	2015	2015	2015	2015	2015
Cultivated and managed areas	64	21	5	63	27	51	50	4	6	39	36	0	30	45	20
Forest	22	69	80	28	67	44	43	77	73	54	57	46	57	42	65
Permanent water bodies	6	5	9	3	1	1	1	12	8	1	0	6	0	1	6
Urban / built-up areas	5	1	0	3	1	1	3	1	0	1	5	0	2	3	1
Other	3	5	6	3	4	3	3	7	13	5	2	48	11	10	7

Table 2 Land cover and land use for all countries at the Baltic Sea catchment area except Russia, Belarus and Ukraine in percentage (Source: Corine Land Cover 2018)

Corine Land Cover 2018

	Denmark	Estonia	Finland	Germany	Latvia	Lithuania	Poland	Russia	Sweden	Belarus	Czech Republic	Norway	Slovakia	Ukraine	Total
Year of data	2018	2018	2018	2018	2018	2018	2018		2018		2018	2018	2018		2018
Cultivated and managed areas	74	32	9	70	40	59	59		9		50	1	37		48
Forest	9	47	64	20	38	30	31		59		34	37	45		28
Permanent water bodies	1	5	9	2	2	2	2		8		1	7	0		6
Urban / built-up areas	7	2	1	5	2	3	6		1		9	0	4		3
Other	8	15	16	3	19	6	3		23		7	54	15		15