

Liik
enne
vira
sto

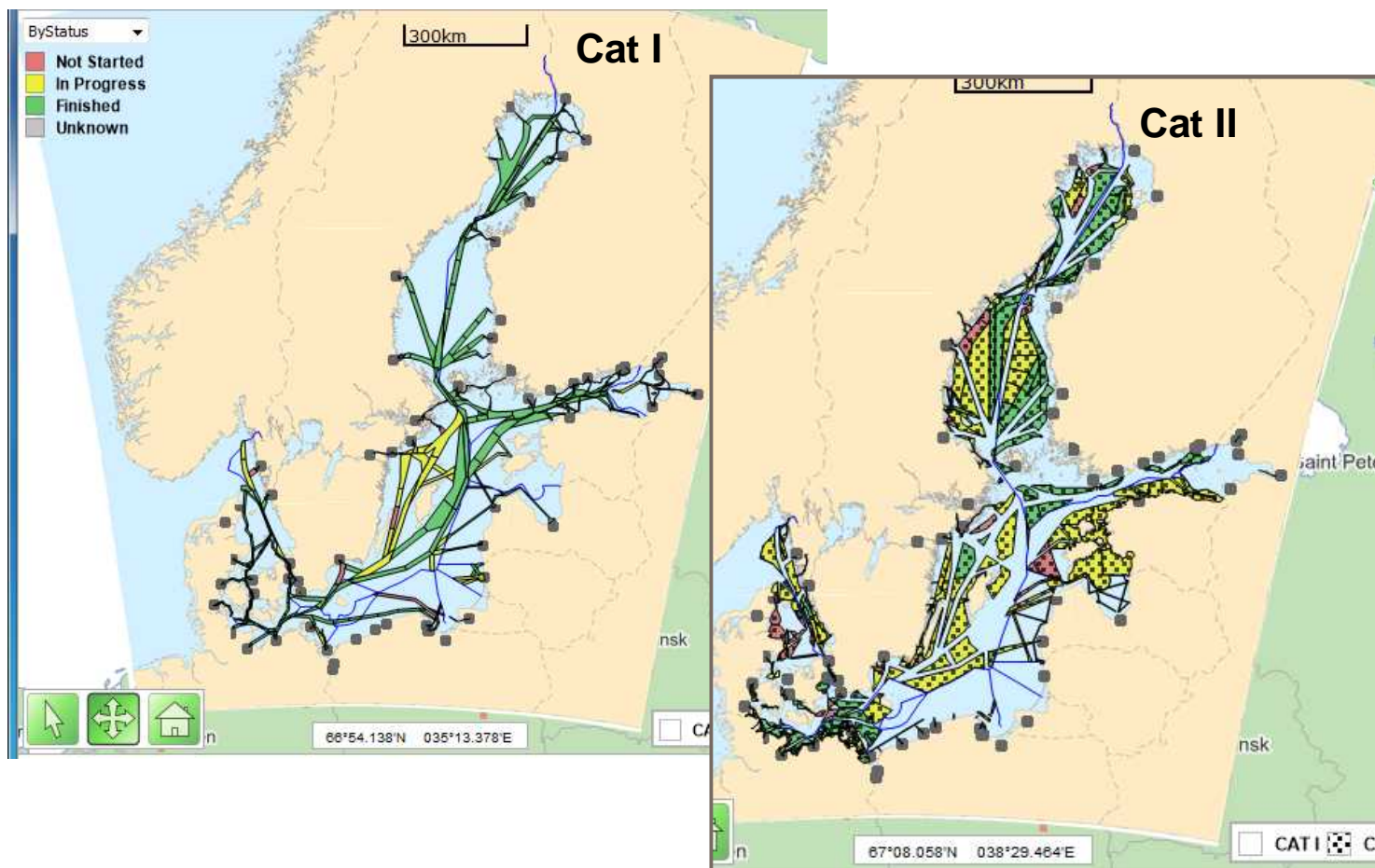
BSHC Re-Survey progress report and EU CEF project FAMOS

HELCOM MARITIME15

agenda 9: Re-surveys



HELCOM re-survey database



<https://helcomresurvey.sjofartsverket.se/helcomresurveysite/>

User interface under renewal



Co-financed by the European Union
Connecting Europe Facility

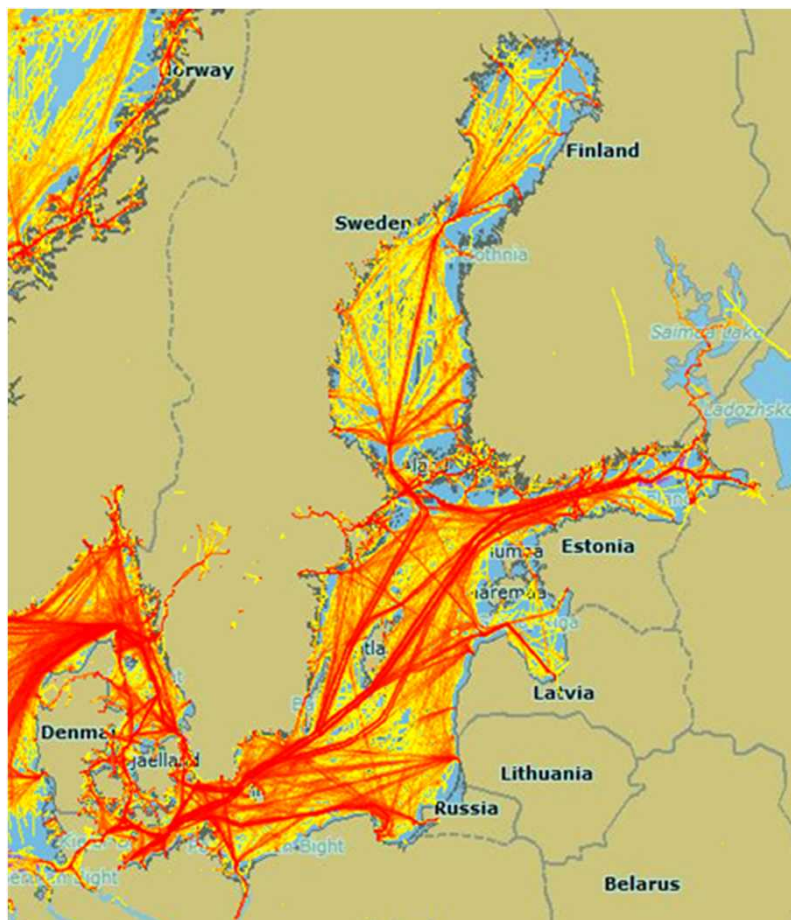
24.11.2015

2

www.liikennevirasto.fi

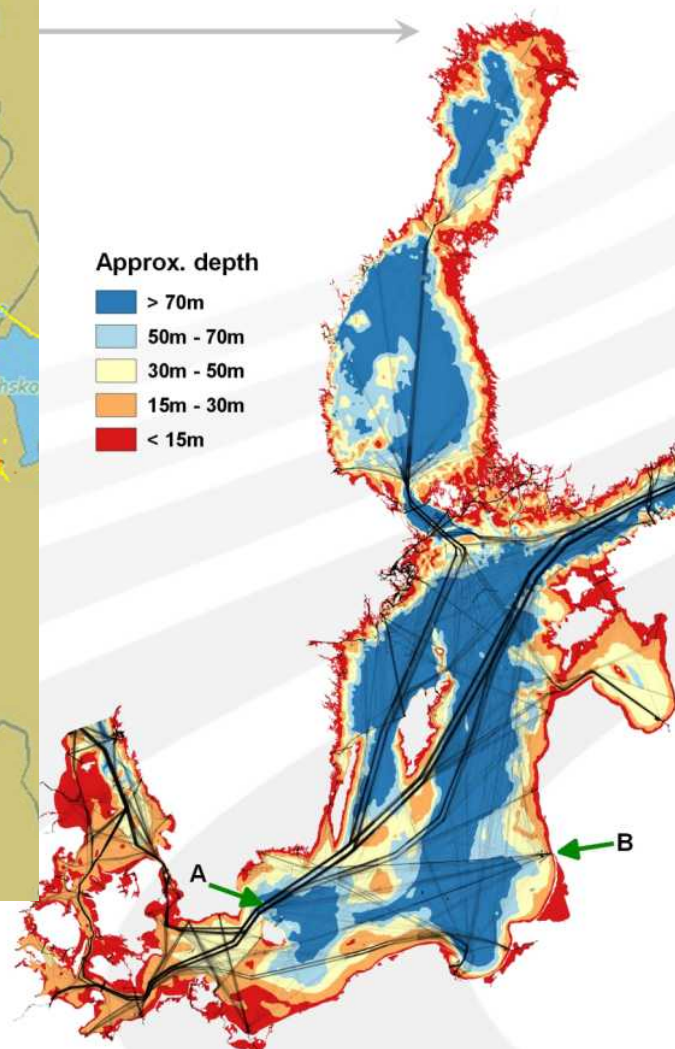
Liikennevirasto

HELCOM routes: AIS, underkeel clearance



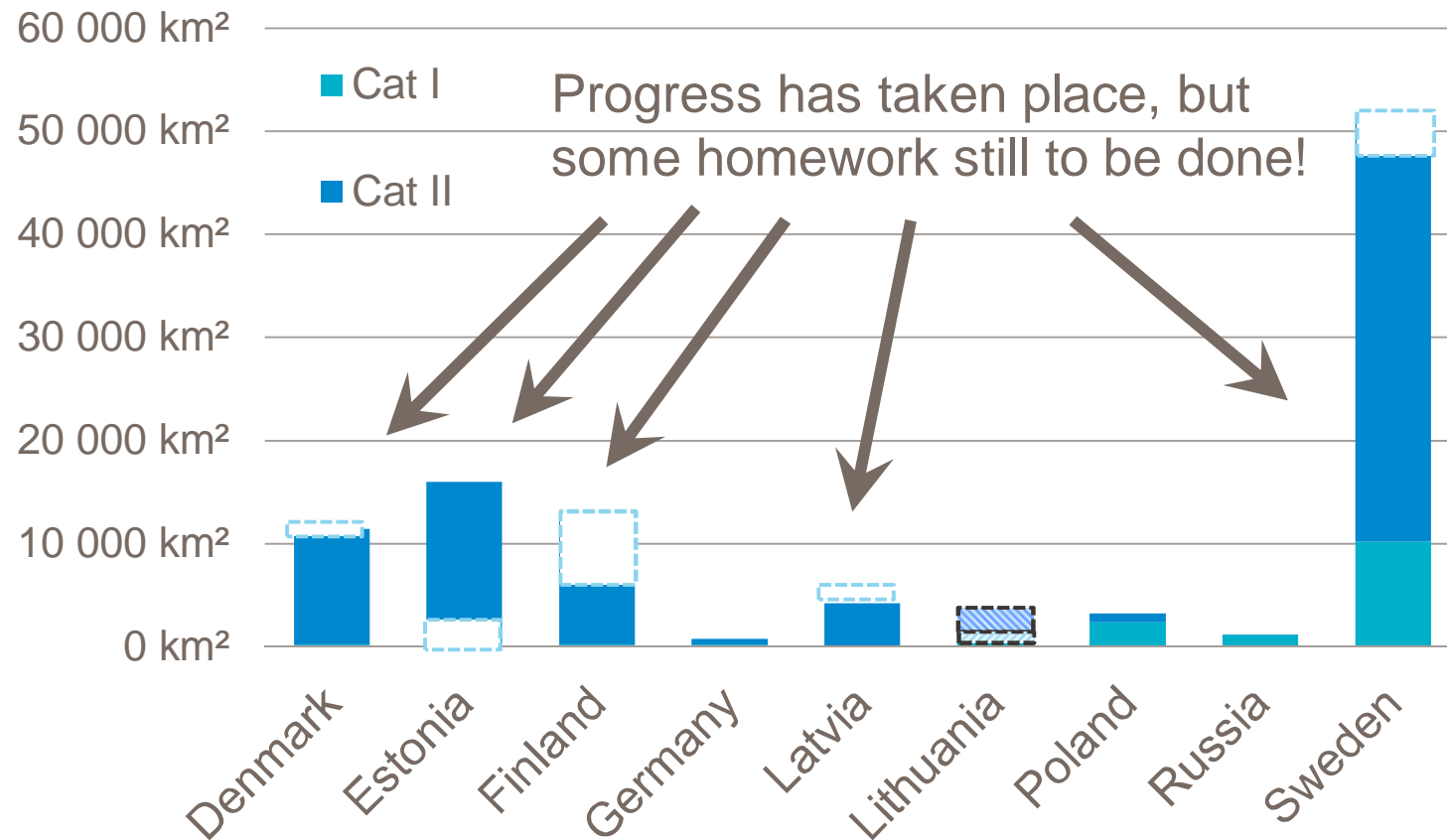
Approx. depth

- > 70m
- 50m - 70m
- 30m - 50m
- 15m - 30m
- < 15m



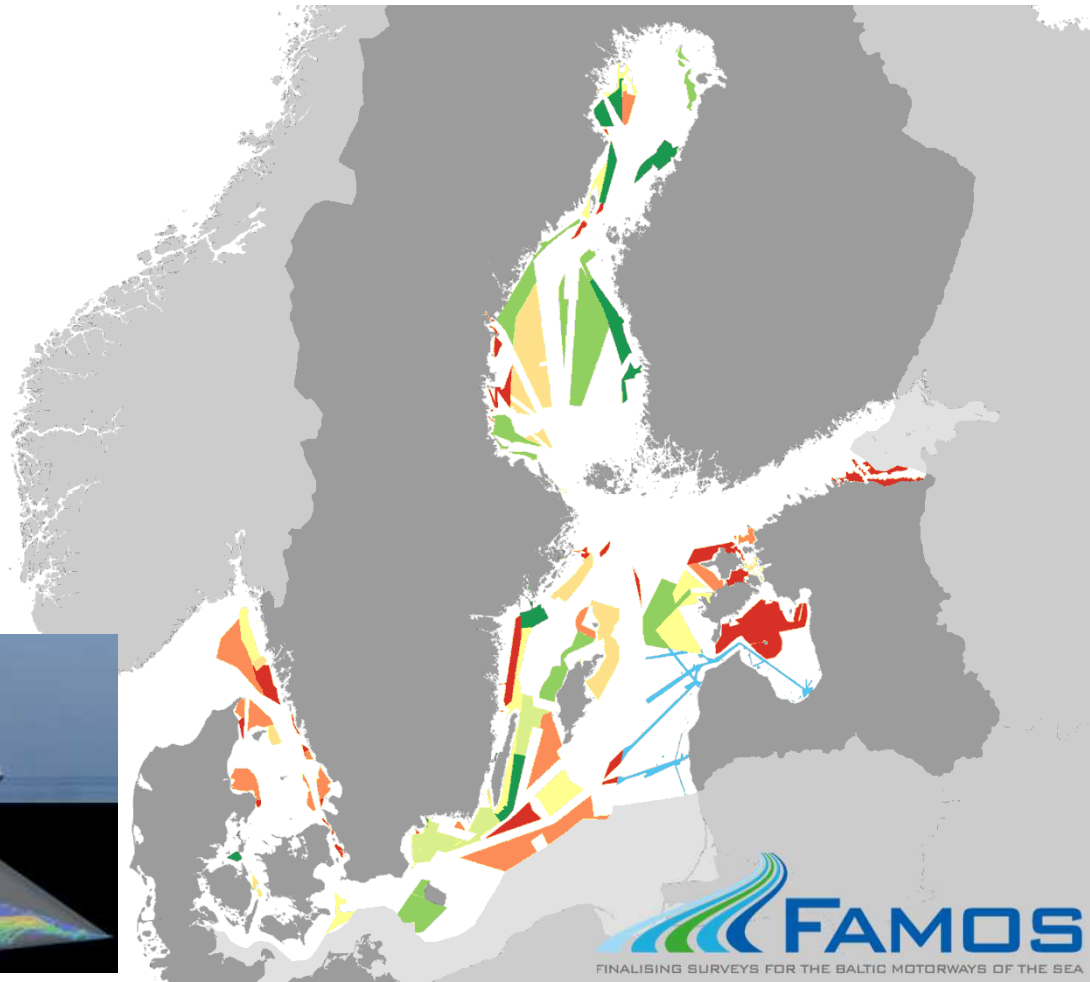
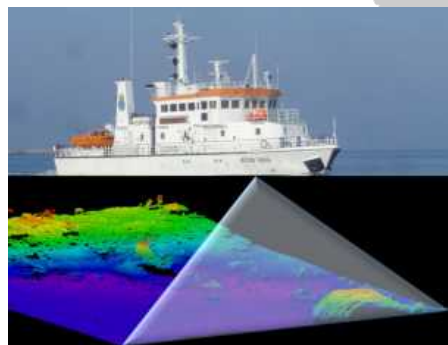
HELCOM AIS info

HELCOM cat I & II shipping routes (HELCOM ministerial meeting Copenhagen decision) remaining to be surveyed and some progress has taken place



HELCOM Re-survey ongoing progress to tackle the remaining cat I & II, support from EU INEA CEF grant program FAMOS

Survey year



FAMOS Freja 2014-2016

Progress 2014-15 includes:

- HELCOM cat I&II Hydrographic re-surveys so far (2014-2015) about 22.000 km² -> updated ENC's and Charts;
- Harmonizing vertical datum:
 - Gravimetric surveys to improve the Baltic Sea geoid model (National Land Survey and research institutes);
- Survey infrastructure: equipment updated;
- Data workflow from Sounding to the Bridge:
 - Bathymetric data base and chart production systems under renewal;
 - S-100 standard "family" under implementation;



Liik
enne
vira
sto



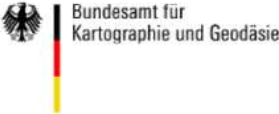
FAMOS Odin 2017-2018 (FAMOS 2nd phase)

EU INEA CEF call opened on 5.11.2015:

- Funding for FAMOS 2nd phase 2017-2018 sought;
 - Motorways of the Sea corridor;
 - Cohesion funds;
- Swedish Maritime Administration is the lead partner and project manager Dr. Benjamin Hell (benjamin.hell@sjofartsverket.se) is coordinating,
- Baltic Sea member states are encouraged to seek funding to speed up HELCOM cat I&II re-surveys;



FAMOS partners and interest groups



Co-financed by the European Union
Connecting Europe Facility

BSHC Baltic Sea Bathymetric Database

<http://data.bshc.pro> to provide public data

