



Baltic Marine Environment Protection Commission

Revised overview document of Port Reception Facilities (PRF) for sewage in the Baltic Sea:

HELCOM Overview 2014



PRF Cooperation Platform meeting

Riga – 03/11/2014



HELCOM

Background information

- **2011:** IMO / MARPOL Annex IV designated the Baltic Sea as a "special area":
 - *"Baltic Sea ports fulfill the criteria of adequacy, before higher regulations take effect (January 2016 at the earliest)"*
 - ***In anticipation... 2010-2013:*** HELCOM Baltic Sea Cooperation Platform on sewage PRF
 - *Discussions with stakeholders / improve PRF in the region*
- **2013 Overview on PRF and related trends in passenger traffic**



HELCOM 2014 overview

= To update the 2013 overview

With...	To...
<ul style="list-style-type: none">• Data we already have• + New data (summer 2014)	<ul style="list-style-type: none">• Update important information concerning availability / characteristics• To work on a smaller scale (=berth) to help to manage cruise ships• Understand the use of PRF in the region: cruise traffic, passengers, etc.

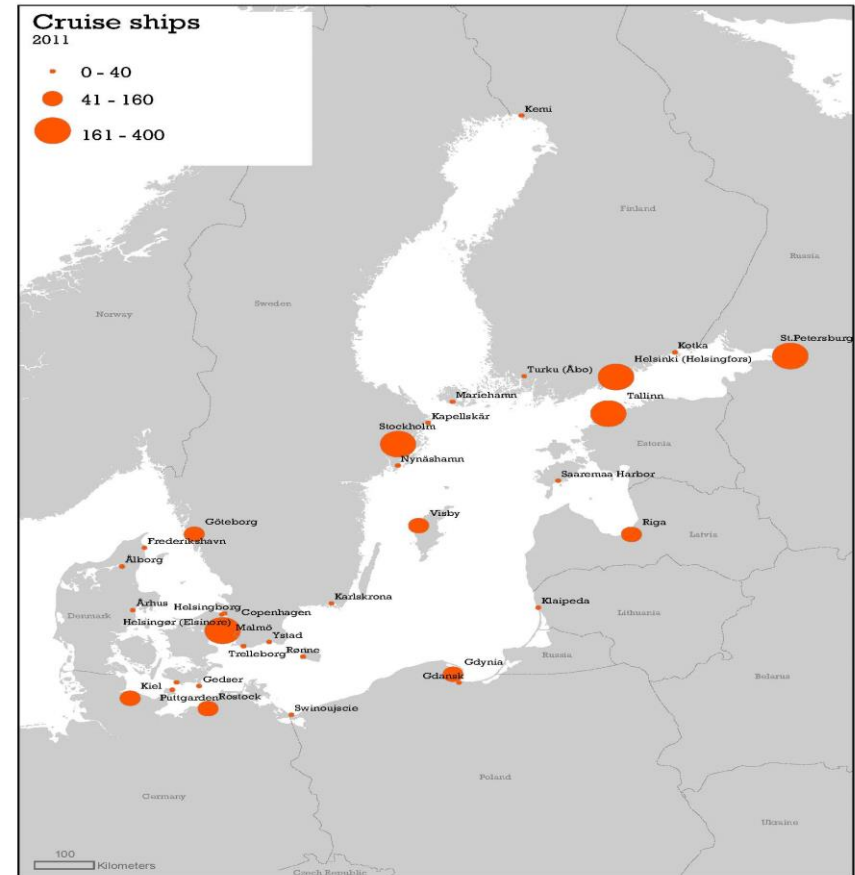


HELCOM 2014 overview

= To update the 2013 overview

With...

- Data we already have
- + New data (summer 2014)



HELCOM

HELCOM 2014 overview

- Joint survey HELCOM - CLIA to ports & cruise ships
(May to October 2014)
 - Visit-specific information: *date / time of travel, passengers, etc.*
 - Volumes: *sewage, discharge, transfer to PRF, sludge, etc.*
 - Sewage management: *mixing B & G ?*
 - Use of PRF: *availability, fees, types of PRF, use, etc.*
 - etc.



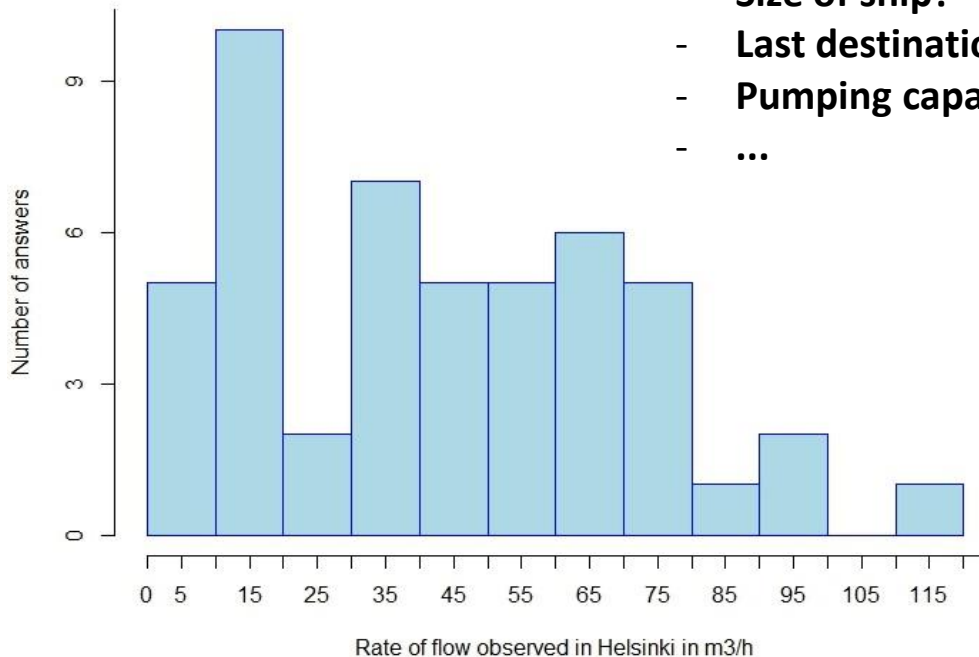
Updating the HELCOM 2013 overview

- Smaller scale (berth)
- Understand the use of PRF / cruise traffic



How to manage the sewage from a boat at berth

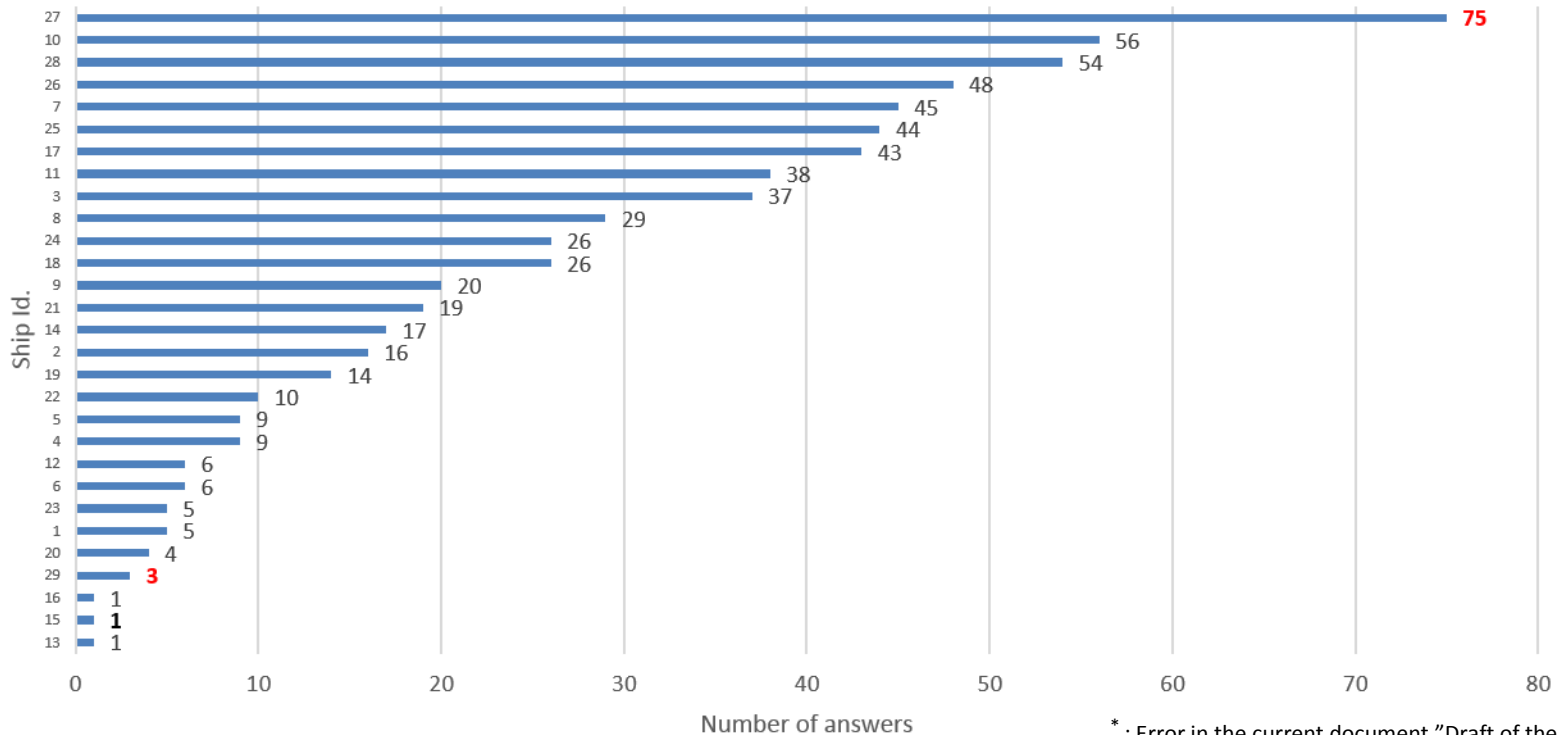
- **Time of travel?**
- **Size of ship?**
- **Last destination?**
- **Pumping capacity at berth?**
- ...



Main results

boat effect?

- 667 ports of call
- 29 cruise ships *



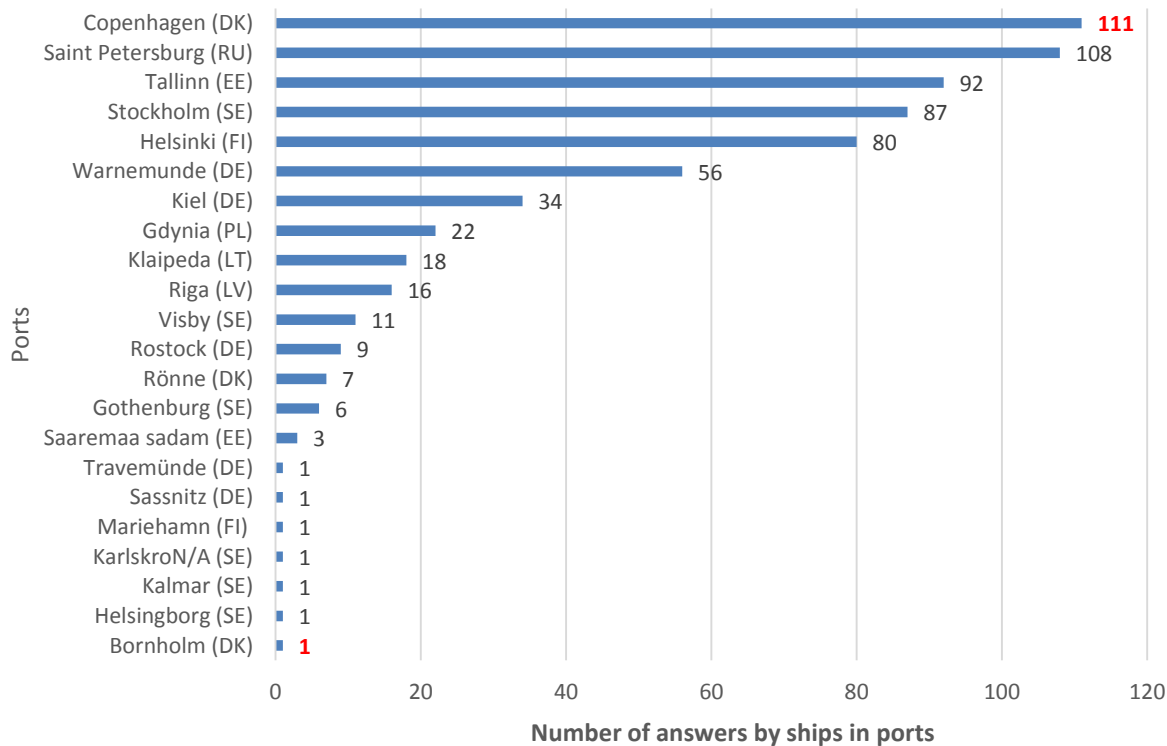
* : Error in the current document "Draft of the 2014 overview"



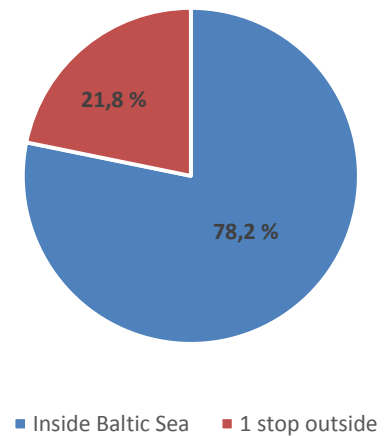
Main results

port effect?

- 22 ports in 9 countries



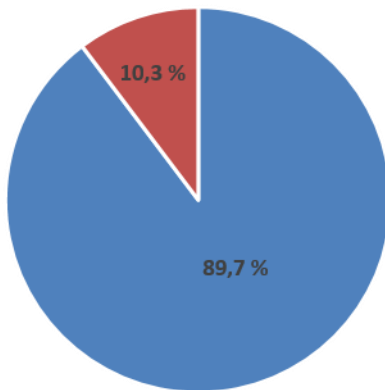
MARPOL Special Area:
% of intra Baltic Sea trip



Main results

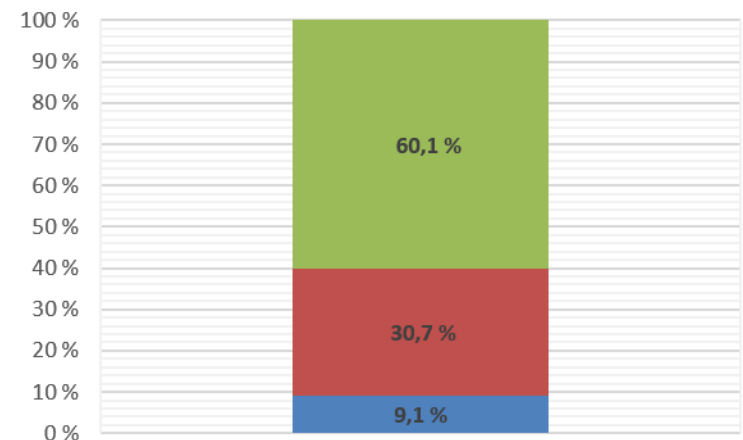
availability and use?

Availability of PRF for the port of calls recorded (%)



■ Availability of PRF ■ PRF not available

Use of PRF when available (%)

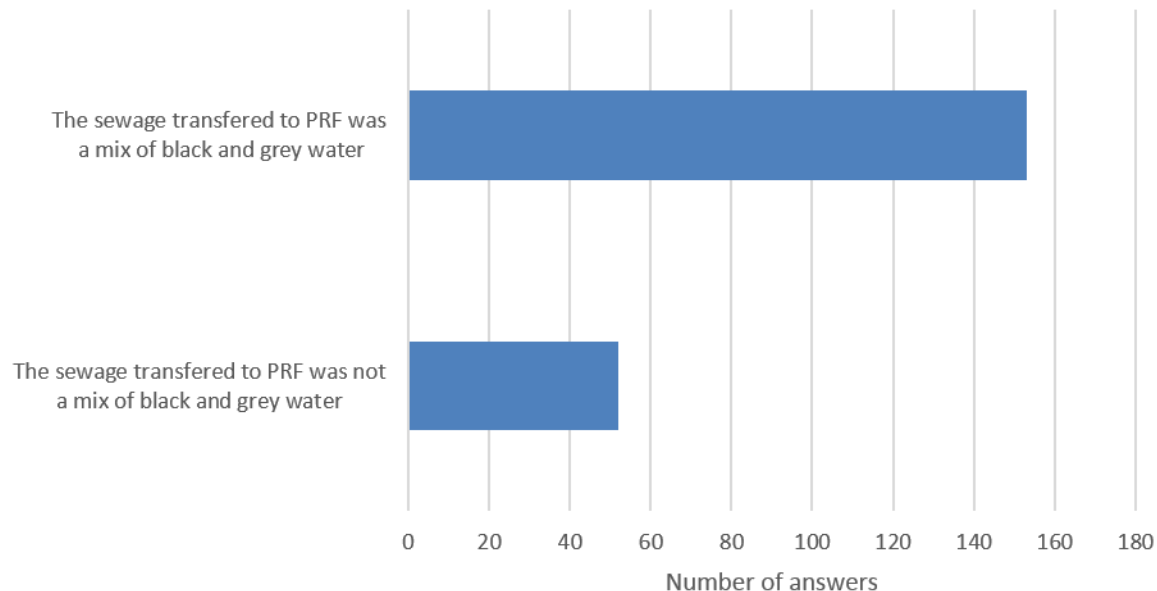


■ No answer ■ Use of PRF ■ No use of PRF

Main results

management on board?

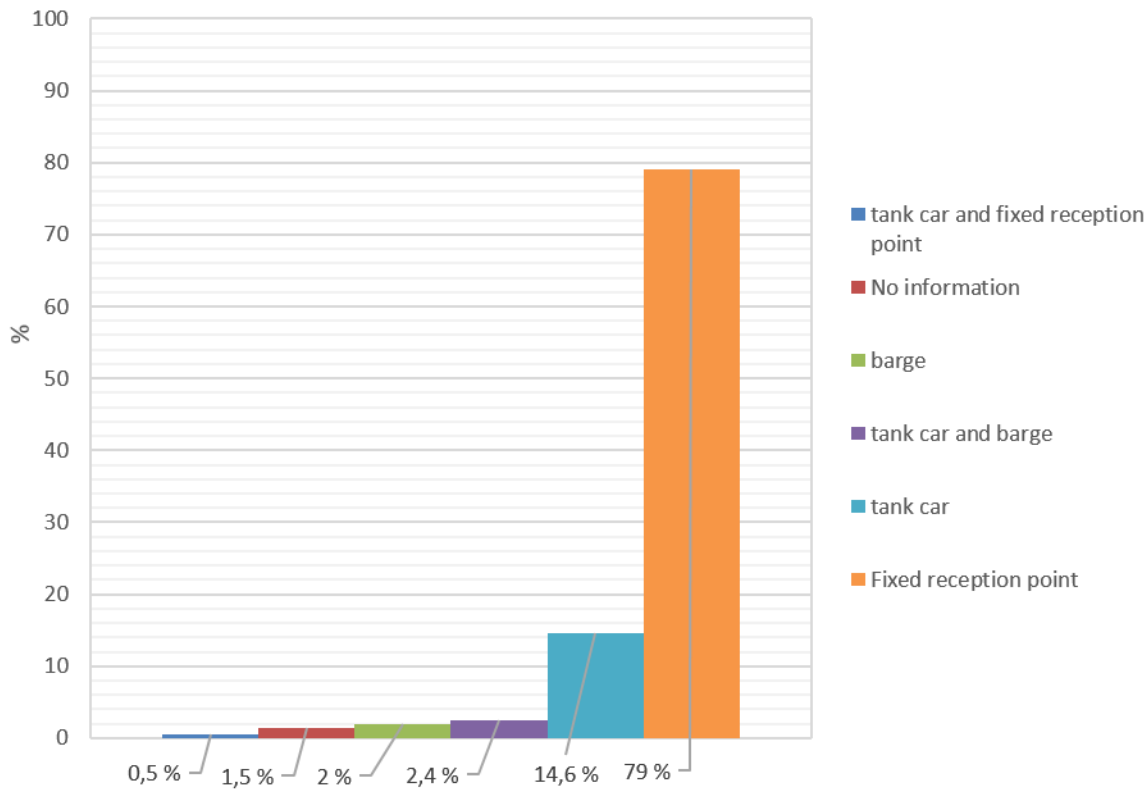
Type of sewage transfered to the PRF



→ A need to mix black and grey waters?

Main results

management at berth?



→ Efficiency of equipments / port / berth

