

# THIRD HELCOM HOLISTIC ASSESSMENTS OF THE BALTIC SEA ENVIRONMENT (HOLAS III)

## - **Planning and process**

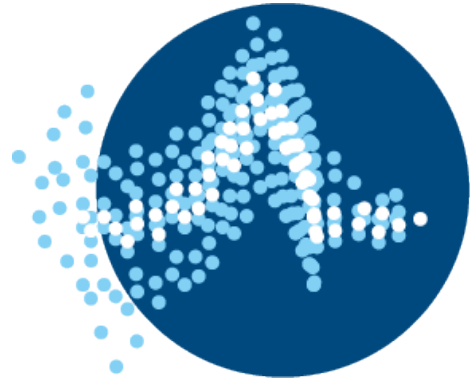
# General information

# Work to support the publication of the Second State of the Baltic Sea report - timeline

	2020				2021				2022				2023			
	Q1	Q2	Q3	Q4	Q1	Q2	Q3	Q4	Q1	Q2	Q3	Q4	Q1	Q2	Q3	Q4
Indicator development/consolidation (HELCOM Indicators)	█	█	█	█	█	█	█	█								
Establishing and ensuring dataflows (HELCOM DataFlow)			█	█	█	█	█	█	█							
Refining and further developments of assessments (HELCOM MetDev)					█	█	█	█	█							
HOLAS III Assessment									█	█	█	█	█	█	█	█

# Changes to HOLAS III

- Based on:
  - Results from the lessons learned survey done after HOLAS II.
  - Early scoping with CPs under GEAR and S&C.
  - Input and feedback from EG and indicator leads.
  - MSFD Art. 8 reporting timelines and timelines of associated national processes.



THIRD HELCOM  
HOLISTIC ASSESSMENT  
OF THE BALTIC SEA  
2016-2021

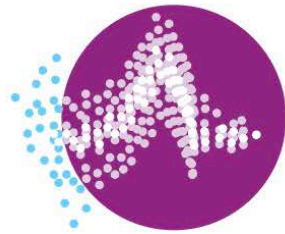
# H O L A S 3



**Eutrophication**



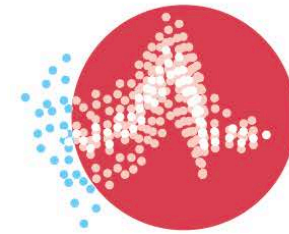
**Biodiversity**



**Hazardous  
substances**



**Economic and  
social analyses**



**Spatial pressures  
and impacts**

# Deliverables

- Updated and expanded spatial pressure and impact tool
- Updated integrated assessment tools
- Updated and expanded methodology for economic and social analyses
- Data and metadata
- Indicator reports
- Thematic assessments
  - Quantitative indicator driven integrated assessment results
  - Results of non-indicator driven analyses
  - Qualitative assessments
- Summary report
- Website

# HOLAS III Assessment Phase (November 2021-December 2023)



# Thematic Assessments

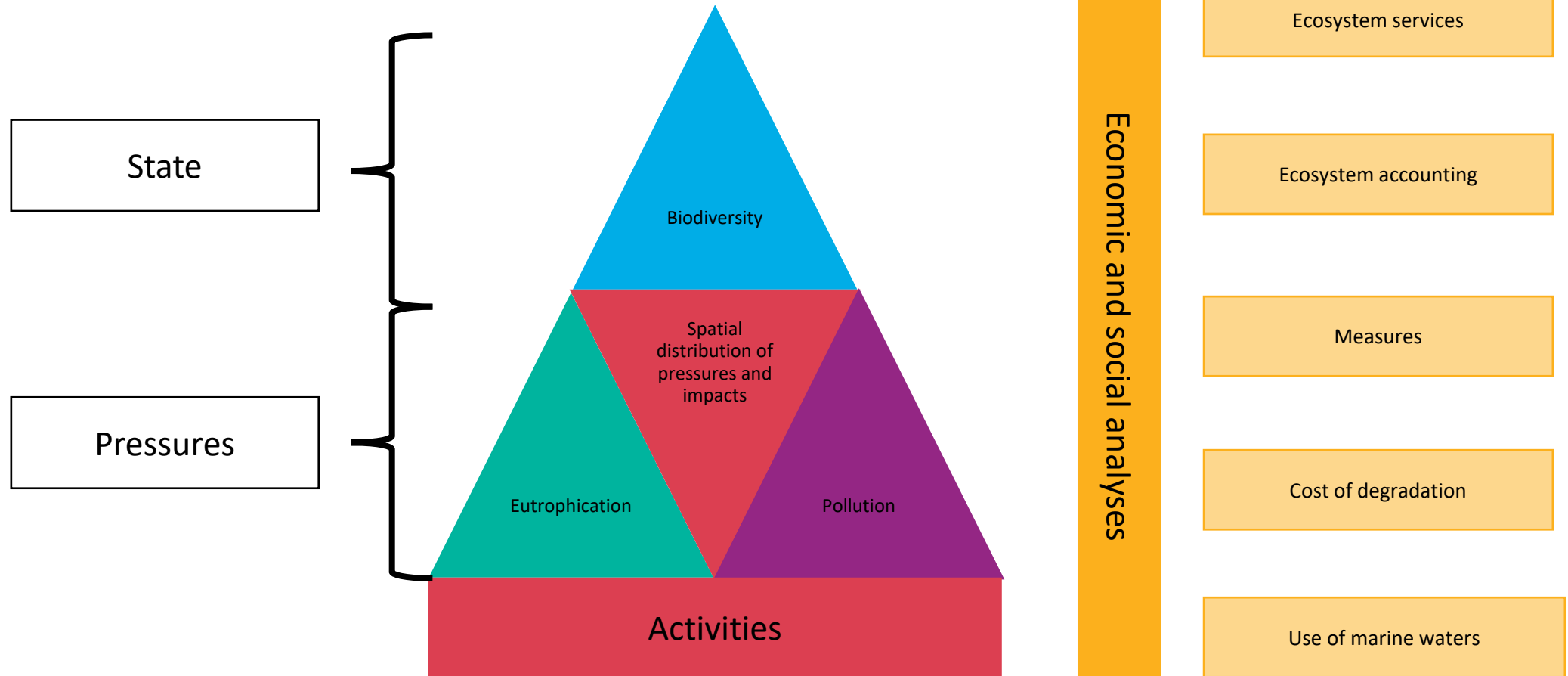
By Jannica Haldin, HELCOM  
Thursday, September 30, 2021



# Thematic Assessments

- Will build on information in indicator reports, integrated assessment results, qualitative assessments and previously published material (e.g. Maritime Assessment, Climate change fact sheet, MPAs, Red list...)

# Logic of thematic assessments



# Thematic Assessments: general

- Focusing on presenting methods and results in detail (focusing on the **WHAT** and the **HOW**).
- New topics introduced, expanding from those topics included in the integrated assessments.



# Template for Thematic Assessments

- Prepare a shared template for thematic assessments.
- Ensures that the relevant information needed for the Summary report is available under all the thematic assessments.
  - Ensure that the thematic assessment reports present the needed information to make them policy relevant and also highlights gaps etc.
  - Support the holistic perspective.
  - Make the information and reports more accessible and easier to navigate.

# Who will do what for the thematic assessments

Biodiversity []	Pollution [EN HAZ, supported by Secretariat]	Eutrophication [IN EUTRO, supported by Secretariat]	Economic and social analyses (Secretariat)	Spatial pressures and impacts (Secretariat)
<ul style="list-style-type: none"> <li>•Introduction [responsible for running BEAT, supported by Secretariat]</li> <li>•Species:               <ul style="list-style-type: none"> <li>•Seals [responsible for running BEAT]</li> <li>•Harbour porpoise (BLUES)</li> <li>•Birds [responsible for running BEAT]</li> <li>•Fish [responsible for running BEAT]</li> <li>•Zooplankton [responsible for running BEAT]</li> <li>•Phytoplankton [responsible for running BEAT]</li> <li>•Foodweb</li> </ul> </li> <li>•Threatened species (Secretariat)</li> <li>•Bycatch (BLUES)</li> <li>•Habitats:               <ul style="list-style-type: none"> <li>•Seabed</li> <li>•Pelagic (BLUES)</li> <li>•Threatened habitats and biotopes (Secretariat)</li> </ul> </li> <li>•Spatial conservation (MPAs, OECMs) (Secretariat)</li> <li>•Restoration (Secretariat)</li> <li>•BEAT methodology (BLUES)</li> </ul>	<ul style="list-style-type: none"> <li>•Introduction [responsible for running CHASE, supported by Secretariat]</li> <li>•Contaminants (Secretariat)</li> <li>•Pharmaceuticals []</li> <li>•Oilspills [indicator lead]</li> <li>•Marine litter (BLUES)</li> <li>•Underwater noise (BLUES)</li> <li>•Non-indigenous species [Indicator lead]</li> <li>•CHASE methodology [EN HAZ, supported by Secretariat]</li> </ul>	<ul style="list-style-type: none"> <li>•Introduction [responsible for running HEAT, supported by Secretariat]</li> <li>•Nutrient concentration [responsible for running HEAT]</li> <li>•Direct effects [responsible for running HEAT]</li> <li>•Indirect effects [responsible for running HEAT]</li> <li>•HEAT methodology [IN EUTRO supported by Secretariat]</li> </ul>	<ul style="list-style-type: none"> <li>•Introduction (Secretariat)</li> <li>•Ecosystem services [Secretariat]</li> <li>•Ecosystem accounting [Secretariat]</li> <li>•Drivers (Secretariat)</li> <li>•Use of marine waters (BLUES)</li> <li>•Cost of degradation (BLUES)</li> <li>• Effectivness of measures (BLUES)</li> <li>• Methodologies (Secretariat)</li> </ul>	<ul style="list-style-type: none"> <li>•Introduction (Secretariat)</li> <li>•Methodology and tool (Secretariat)</li> </ul>

# Thematic Assessments: Provisional timeline

Process
Submission (with date)
Review/endorsement
Approval

## 2022

Month	1	2	3	4	5	6	7	8	9	10	11	12
Integrated assessments										17 October		
Thematic assessment reports												5 December

## 2023

Month	1	2	3	4	5	6	7	8	9	10	11	12
Thematic assessment reports			15-16 March									



# Summary report

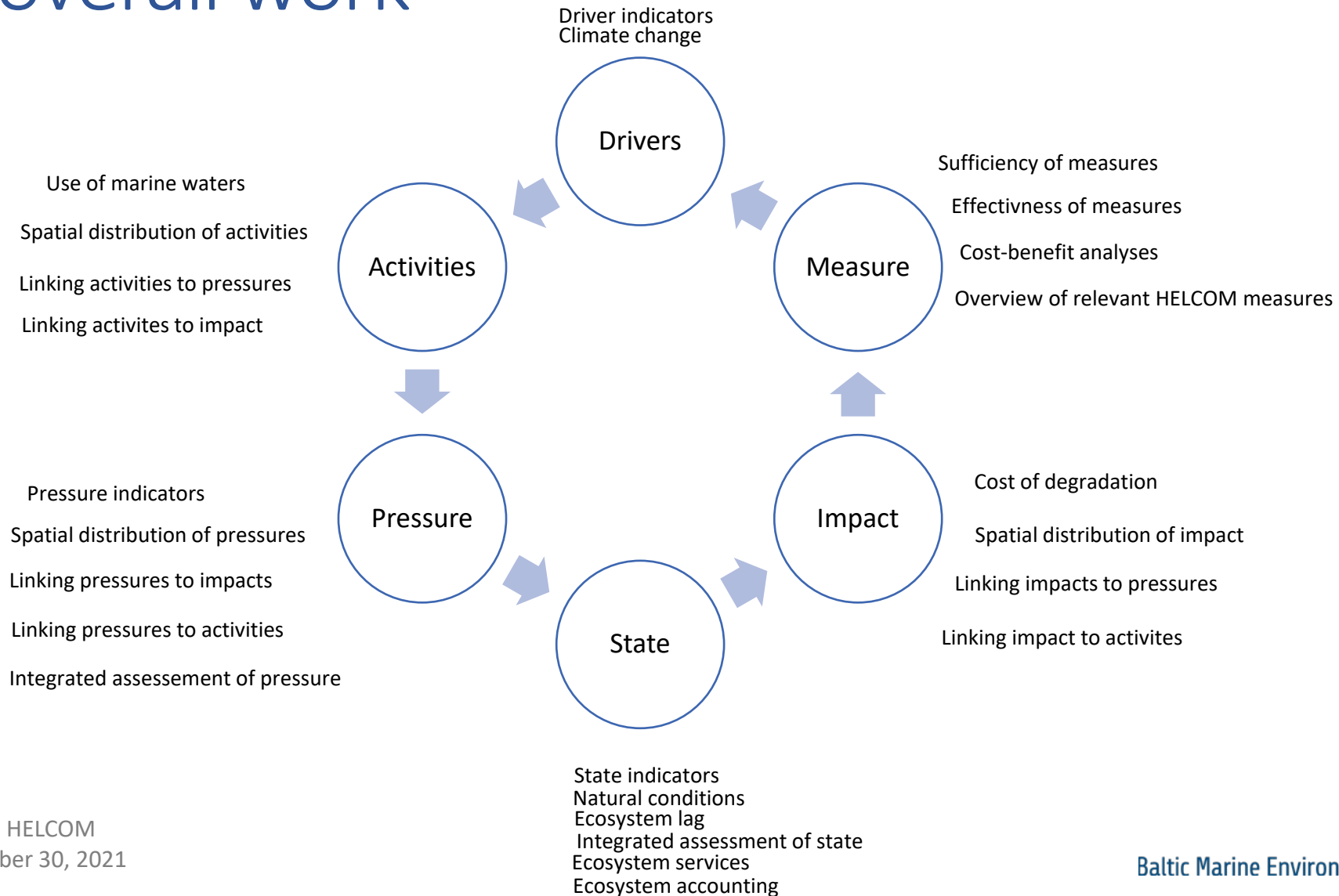
By Jannica Haldin, HELCOM  
Thursday, September 30, 2021

# Summary Report: general

- Will focus on linking the information together and the holistic aspects (looking at the **WHAT** and the **WHY**).



# Link between HOLAS III and HELCOM overall work



# Summary Report topic chapters, examples

## Chapter X

- Status/state (map+text)
  - What indicators/topics are considered (textbox?)
- Trends (graph+text)
- Links ecosystem services
- What are the main pressures (map+text)
  - What do we know about sources?
  - What do we know about pathways?
- What are the main activities (pressure/activity matrix+map+text)
  - Use of marine waters
  - Ecosystem accounting
- Drivers
  - Direct
    - How does climate change effect this topic
  - Indirect
- What actions/measures are HELCOM taking to tackle these activities/pressures (HELCOM actions overview+spatial presentation+text)?
- Natural conditions/ecosystem lag
- How might this topic affect/be affected by other topics included in the assessment (crosslinkage graph+text)
- Gaps/uncertainties
- Summary of impacts
  - Cost of degradation (if available)

# Thank you for your attention!

