

2017 HELCOM Overview on Port Reception Facilities (PRF)

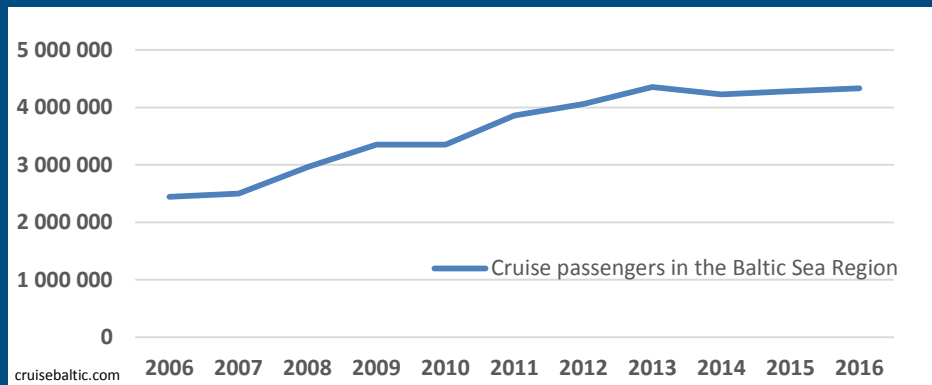


HELCOM

Hamburg, 13 September 2017

HELCOM Overview 2014

- Status of sewage PRF / their use in 2014
- Focus on cruise ships



Baltic Marine Environment Protection Commission



- **2 sources of information:**
 - National administrations and industry (PRF Cooperation Platform)
 - HELCOM AIS data (April – October 2014)

www.helcom.fi



HELCOM

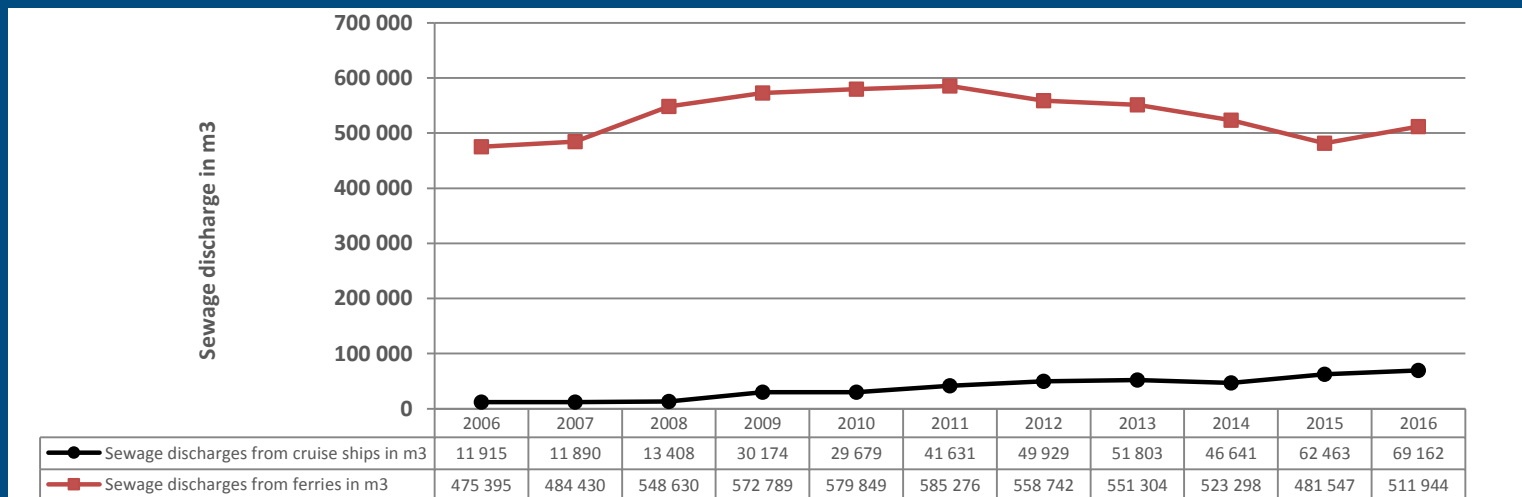
The HELCOM Overview 2017 update:

- **Update for 2016: 25 ports – comments from CPs**

- Sewage PRF status
- Planned improvements
- Status before 2016
- Passenger traffic trends (2006 – 2012 or 2006 – 2016 with update)

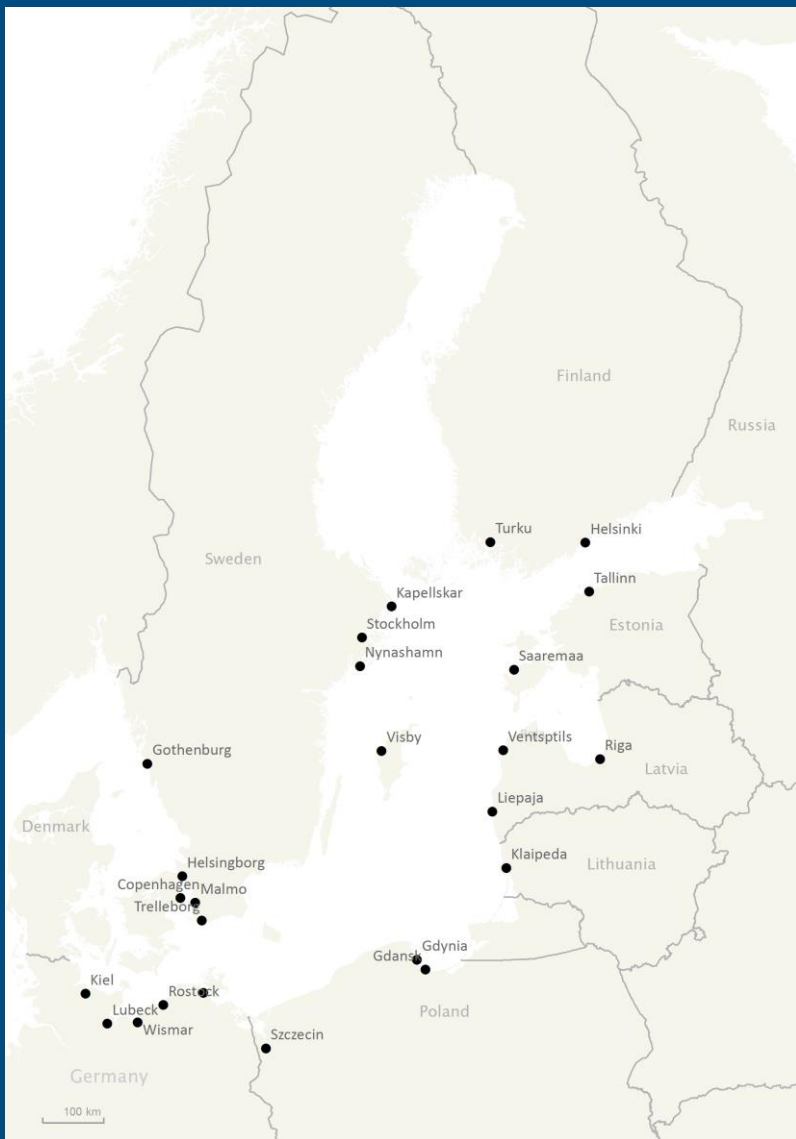
- **New information: sewage discharge at ports by ferries / cruise ships**

Ex: Stockholm

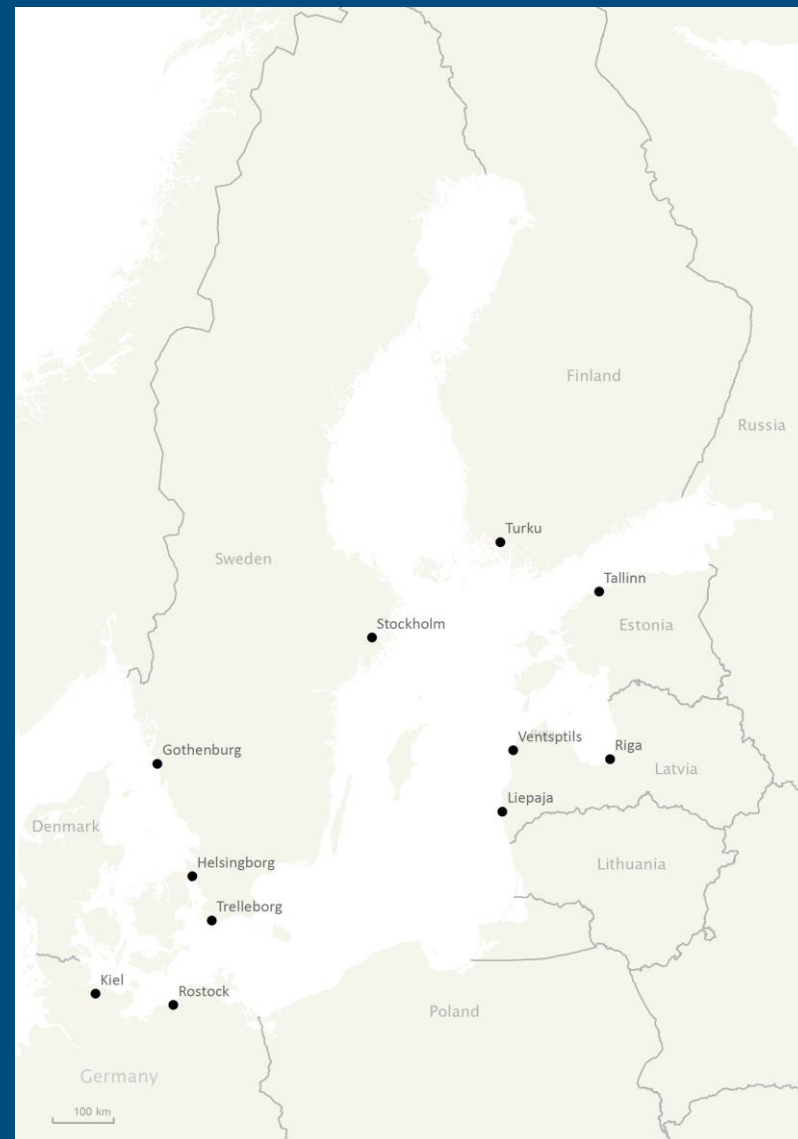


HELCOM

Ports with updated information on PRF and passenger traffic trends:



Ports with new information concerning the volume of sewage discharged at ports:



HELCOM

Finalising HELCOM Overview 2017

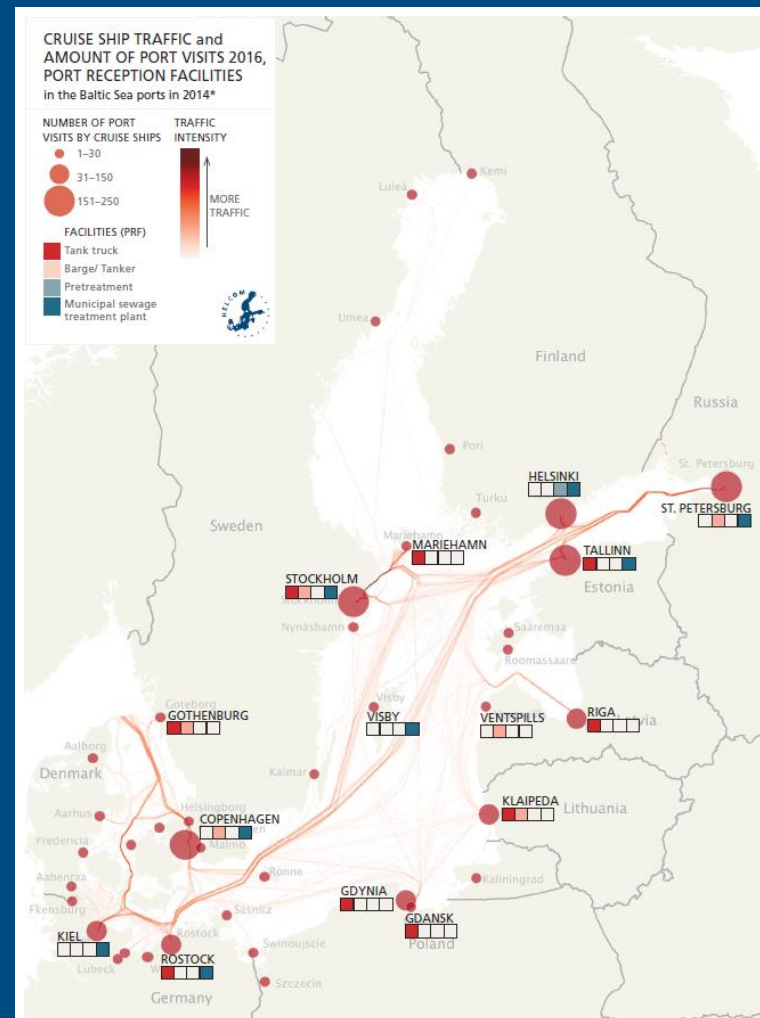
Introductory chapters &
Ferry traffic to be included

Next week Submission to
HELCOM MARITIME 17-
2017

10-12 October in
St.Petersburg

Release Dec 2017/Jan 2018

Corrections and updates are
still welcome!



HELCOM

Future follow up of PRF developments?

Updates of the PRF
overview time consuming

Could these be done in a
smarter way?

What would be the most
convenient way to provide
updates?

Could some other platform
than HELCOM take over?



HELCOM