

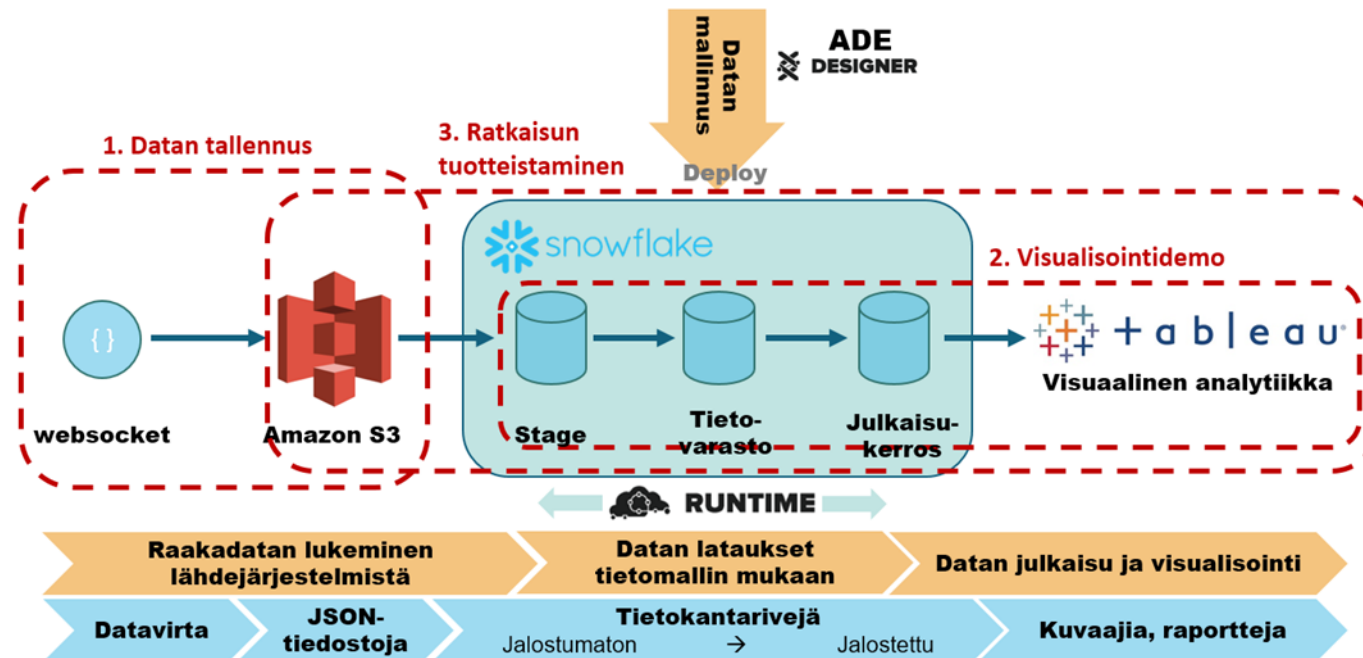
AIS analysis tool - for fairway planning and maintenance purposes

- Implemented with a general-purpose off-the-self data visualization software (Tableau, www.tableau.com)
- Based on identified operational needs, the following three different views of the historical AIS data were defined and implemented:
 - **General statistic** on traffic in selected fairway area during selected time interval including type and draft of vessels.
 - **Route of an individual vessel** during selected time interval.
 - **Routes of all vessels, in the selected area** during selected time interval.
- The views are used for:
 - monitoring how well the full capacity of fairways is used
 - verifying the execution of the fairway maintenance work
 - analysing the actual routes used by vessels in fairway areas



AIS data

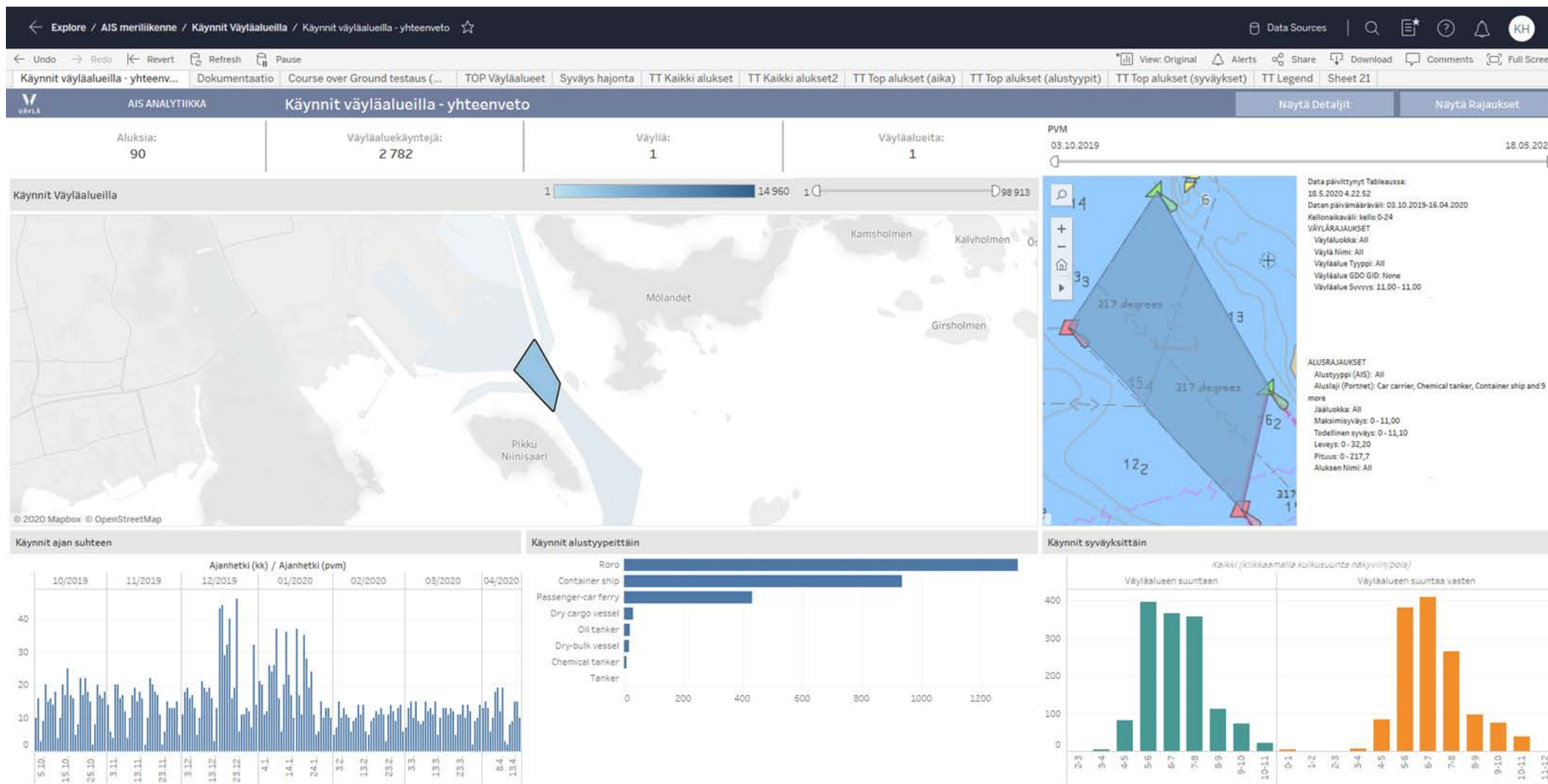
- Data stream from TMFG AIS client interface (Finnish AIS data) is first stored into Amazon S3 Cloud Storage, then into Snowflake Data Warehouse and finally portrayed with Tableau software
- Both Amazon S3 and Snowflake provide a documented interface which can be used also by other applications



General Statistics

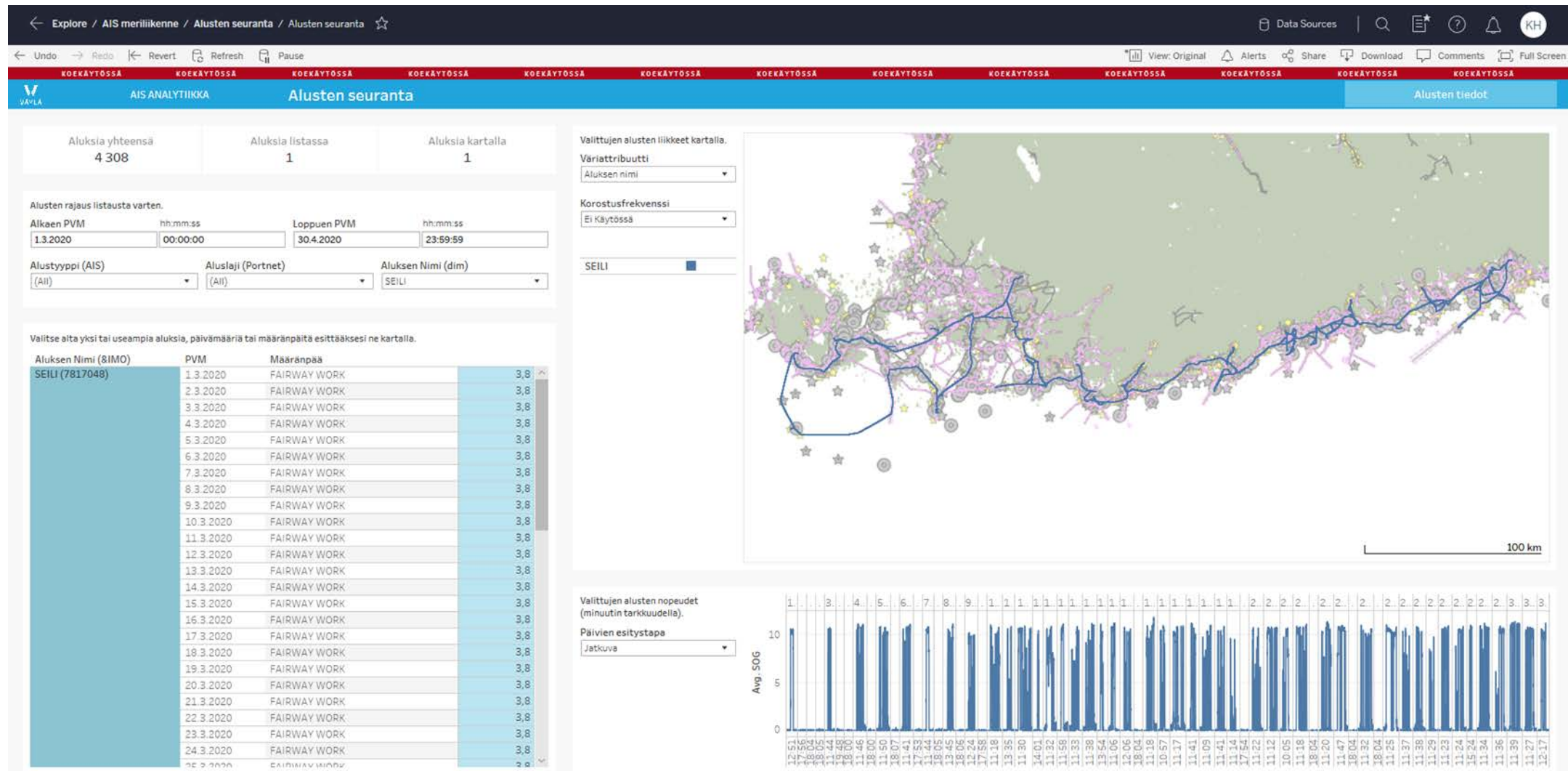


Finnish Transport
Infrastructure Agency



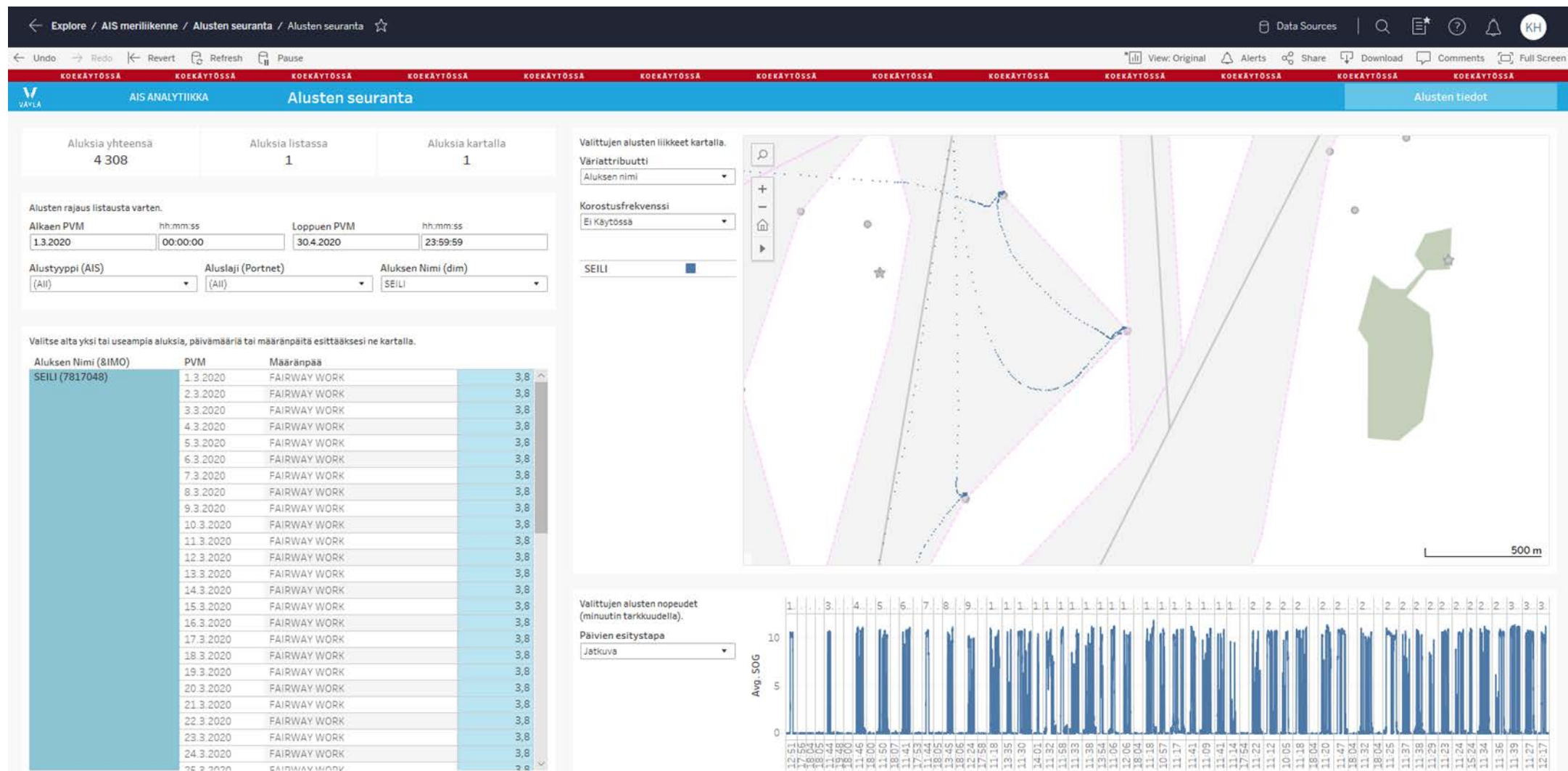


Route of an individual vessel (1/2)



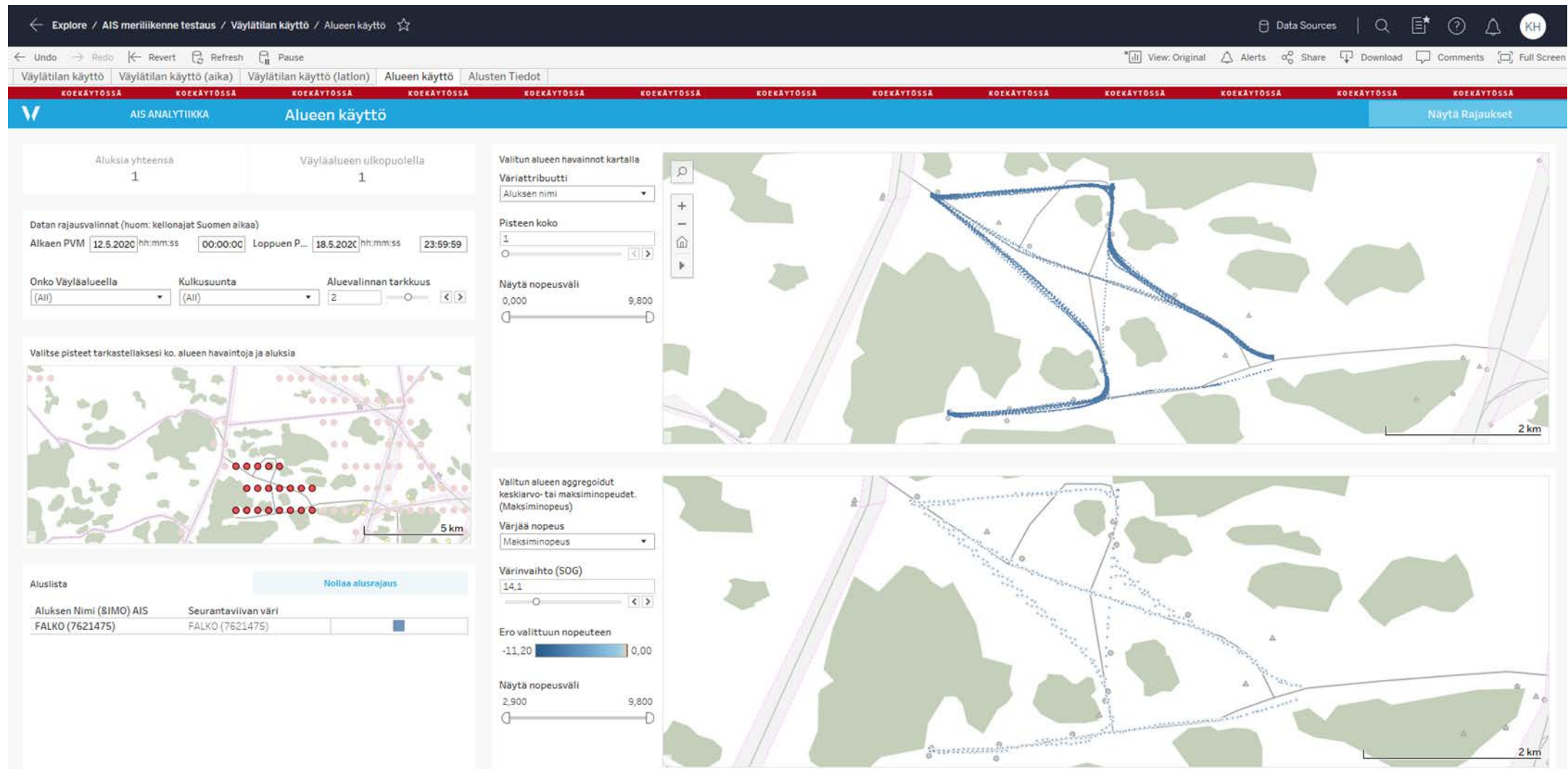


Route of an individual vessel (2/2)



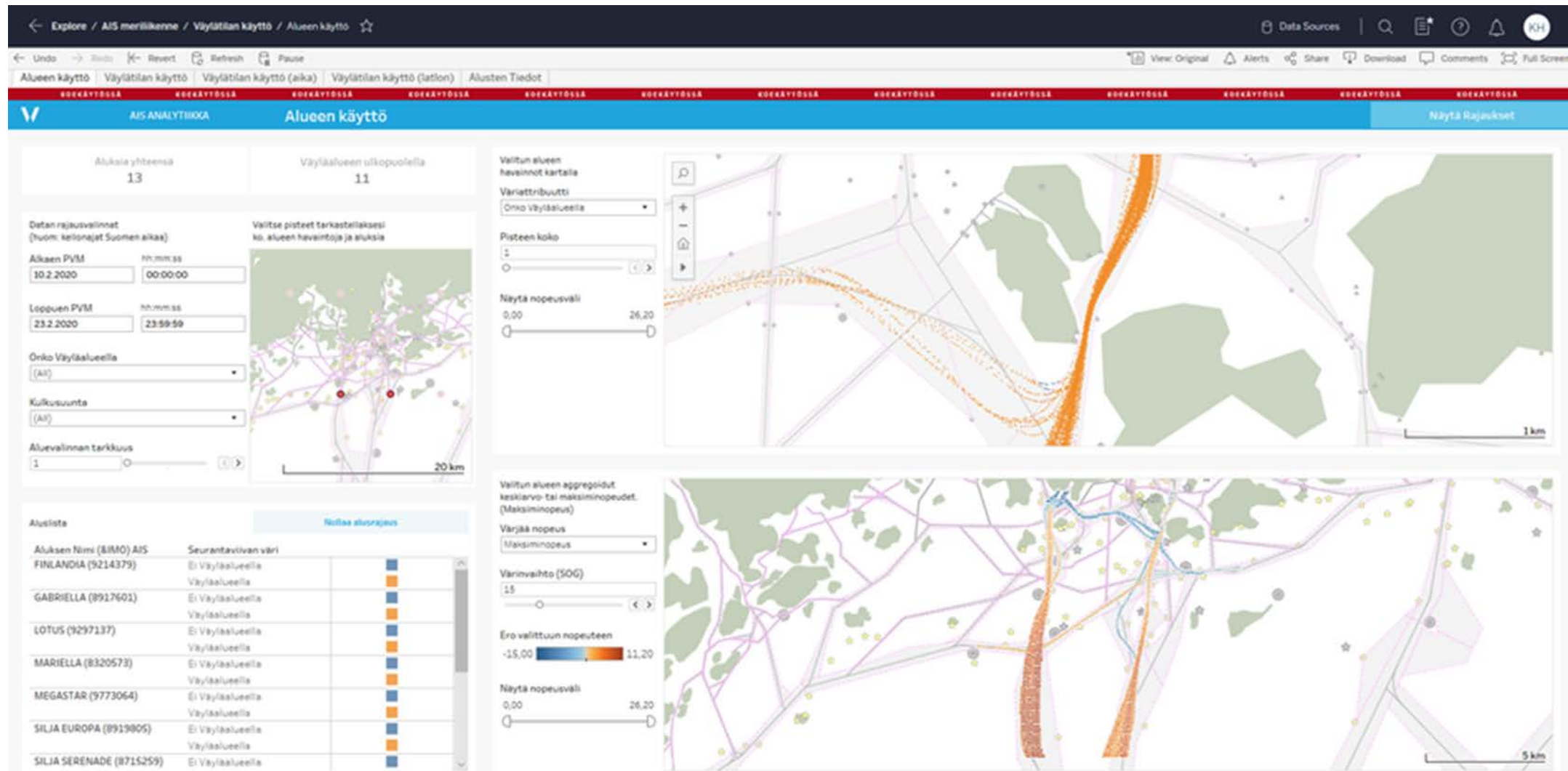


Routes of all vessels in selected area (1/2)





Routes of all vessels in selected area (2/2)





Finnish Transport
Infrastructure Agency